

# SitOnIt • Seating®

## Focus Mesh



Slate

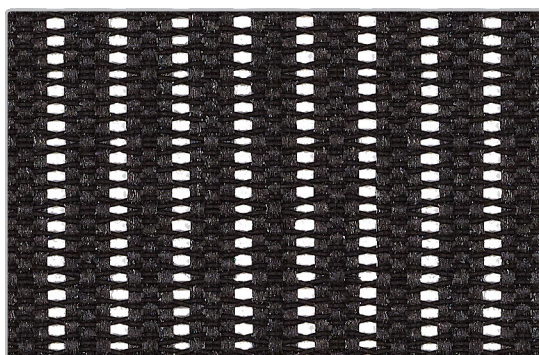
Pattern: Focus Mesh

70% Elastomeric,  
30% Polyester

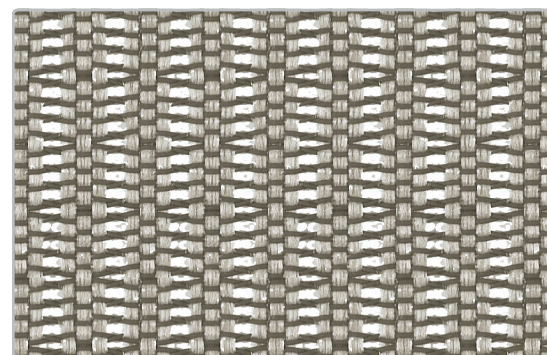
Abrasion:  
100,000+ double rubs

CAL 133 approved (133)

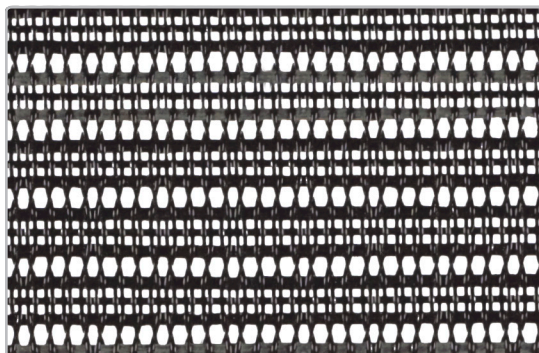
Bleach cleanable **BLEACH**  
Cleanable



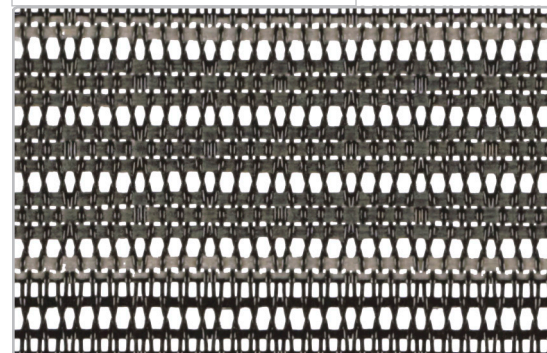
Black



Sand



Freeway



Impress

|                        |   |
|------------------------|---|
| <b>Pattern</b>         | Focus Mesh  |
| <b>Content</b>         | 70% Elastomeric, 30% Polyester  |
| <b>Abrasion</b>        | 100,000+ Double Rubs  |
| <b>Applicable ACT®</b> | ☼ ☒ ☀ ☿ ☆   |
| <b>Cleaning Code</b>   | WS/BC: Water based cleaning agents and foam may be used, vacuuming or light brushing is recommended to prevent dust and soil buildup. Bleach cleanable <b>BLEACH</b><br>Cleanable |
| <b>Samples</b>         | To order samples, call (888) 274-8664 or visit <a href="http://sitonit.net">sitonit.net</a> or <a href="http://ideondesign.com">ideondesign.com</a>                               |

### icon upholstery definitions



#### Fire Retardency

Flammability testing determines a fabric's resistance to burning. Passes Cal 117.



#### Colorfastness to Wet and Dry Crocking

The rubbing off of color from fabric onto clothing, hands or other materials and can occur under wet or dry conditions. Passes AATCC 8-1974 Dry Crocking. Class 4 minimum, Wet Crocking. Class 3 minimum.



#### Colorfastness to Light

The degree to which fabric will retain its color when exposed to light. Passes AATCC 16A-1974 or AATCC 16E-1976. Class 4 minimum at 40 hours  
Note: Class 4 minimum at 60 hours is recommended for direct sunlight exposure.



#### Physical Properties

Brush Pill Test to determine a fabric's pilling, Breaking/Tensile Strength Test determines the ability of a fabric to withstand tension without breaking or tearing. Seam Slippage Test determines the pulling apart of fabrics at the seams. Passes Brush Pill ASTM D3511, 3-4 minimum, Breaking Strength ASTM D3597-D1682-64 (1975) 50 lbs. minimum in warp & weft, Seam Slippage ASTM D3597-D434-75 25 lbs. minimum in warp & weft.



#### Abrasion

The ability of a fabric to withstand damage from wear and rubbing. Passes Heavy Duty Contract ASTM 3597 modified (No.10 cotton duck); 30,000 double rubs Wyzenbeek Method or ASTM 4966 modified (with 21 oz. wt.); 40,000 rubs Martindale Method.



#### Cal 133

The mesh can be used in combination with other designated SitOnIt components to meet the California Technical Bulletin 133 standard for furniture flammability.

## SitOnIt • Seating®

(888) 274-8664

(714) 995-4855 Fax

[sitonit.net](http://sitonit.net)

[sales@sitonit.net](mailto:sales@sitonit.net)

### Showroom Locations

#### Los Angeles

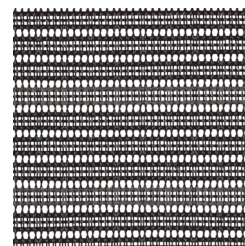
6415 Katella Avenue  
Cypress, CA 90630

#### Chicago

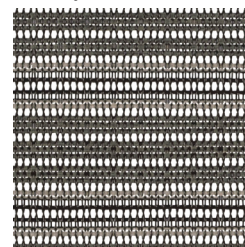
222 Merchandise Mart Plaza  
Suite 1150  
Chicago, IL 60654

#### New York City

11 East 26th  
New York, NY 10010



Freeway



Impress