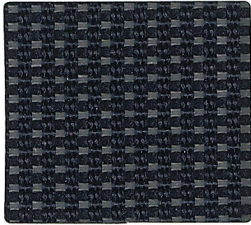
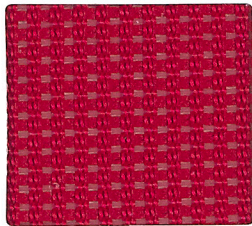


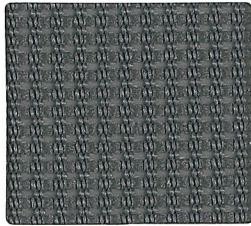
Electric Blue



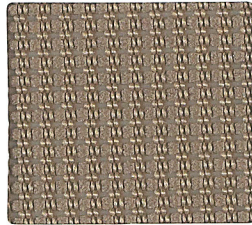
Navy



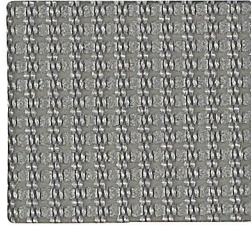
Fire



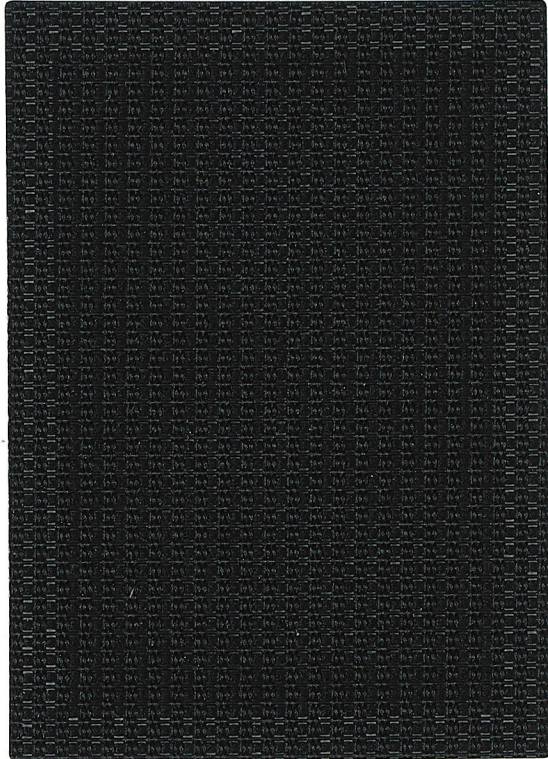
Nickel



Desert



Fog

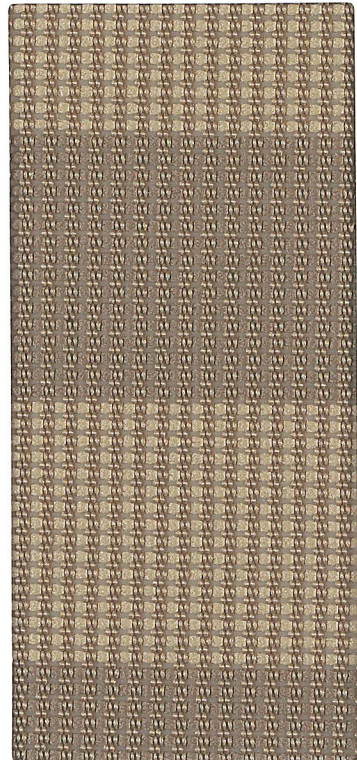


Onyx

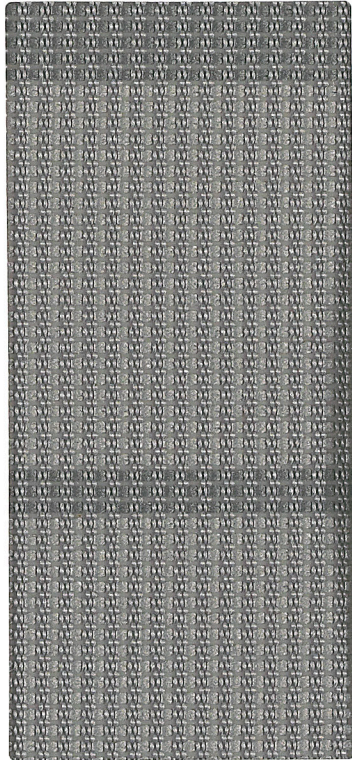
Torsa Mesh

68% Polyester,
32% Poly Elastomeric

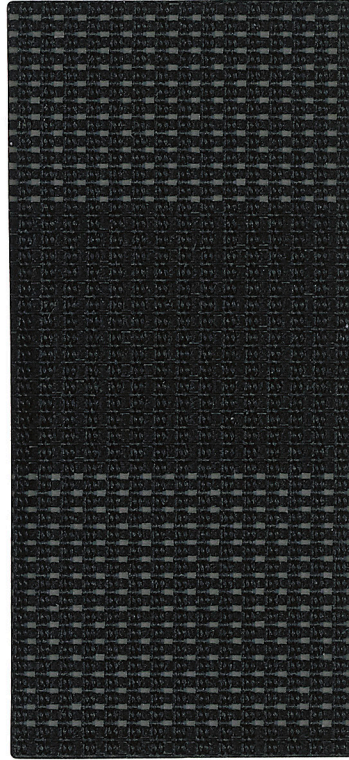
Abrasion:
100,000 double rubs



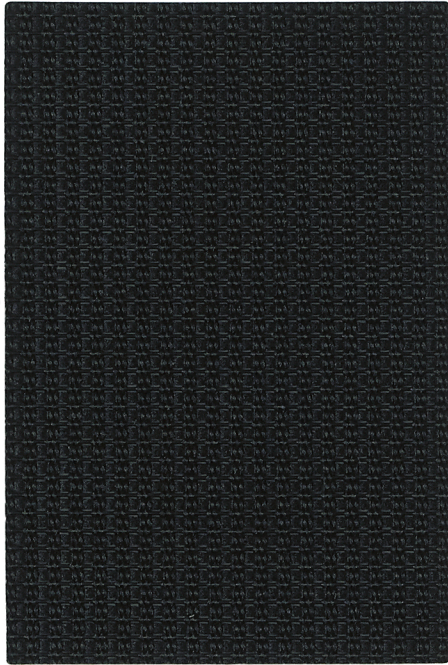
Desert Stripe



Fog Stripe








Onyx Stripe



	Torsa Mesh
Content	68% Polyester, 32% Poly Elastomeric
Width	54"
Abrasion	100,000 Double Rubs
Applicable ACT®	🔥 ▲ ✨ 🌀 ☆
Cleaning Code	WS: Water based cleaning agents and foam may be used, vacuuming or light brushing is recommended to prevent dust and soil buildup. BC: Bleach Cleanable BLEACH Cleanable
Samples	To order samples, call 1-888-274-8664 or visit www.sitonit.net

icon upholstery definitions

-  **Fire Retardancy**
Flammability testing determines a fabric's resistance to burning. Passes Cal 117.
-  **Colorfastness to Wet and Dry Crocking**
The rubbing off of color from fabric onto clothing, hands or other materials and can occur under wet or dry conditions. Passes AATCC 8-1974 Dry Crocking. Class 4 minimum, Wet Crocking. Class 3 minimum.
-  **Colorfastness to Light**
The degree to which fabric will retain its color when exposed to light. Passes AATCC 16A-1974 or AATCC 16E-1976. Class 4 minimum at 40 hours
Note: Class 4 minimum at 60 hours is recommended for direct sunlight exposure.
-  **Physical Properties**
Brush Pilling Test to determine a fabric's pilling. Breaking/Tensile Strength Test determines the ability of a fabric to withstand tension without breaking or tearing. Seam Slippage Test determines the pulling apart of fabrics at the seams. Passes Brush Pilling ASTM D3511, 3-4 minimum, Breaking Strength ASTM D3597-D1682-64 (1975) 50 lbs. minimum in warp & weft, Seam Slippage ASTM D3597-D434-75 25 lbs. minimum in warp & weft.
-  **Abrasion**
The ability of a fabric to withstand damage from wear and rubbing. Passes Heavy Duty Contract ASTM 3597 modified (No.10 cotton duck); 30,000 double rubs Wyzenbeek Method or ASTM 4966 modified (with 21 oz. wt.); 40,000 rubs Martindale Method.



888.274.8664

714.995.4855 Fax

www.sitonit.net sales@sitonit.net

www.IDEONDesign.com sales@ideondesign.com

Showroom Locations

Los Angeles
6415 Katella Avenue
Cypress, CA 90630

Chicago
222 Merchandise Mart Plaza
Suite 1150
Chicago, IL 60654

New York City
11 East 26th
New York, NY 10010

