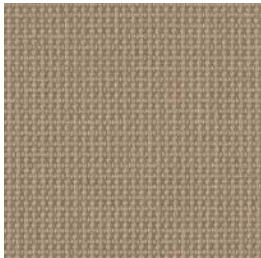
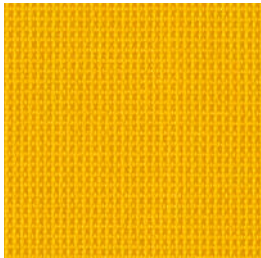


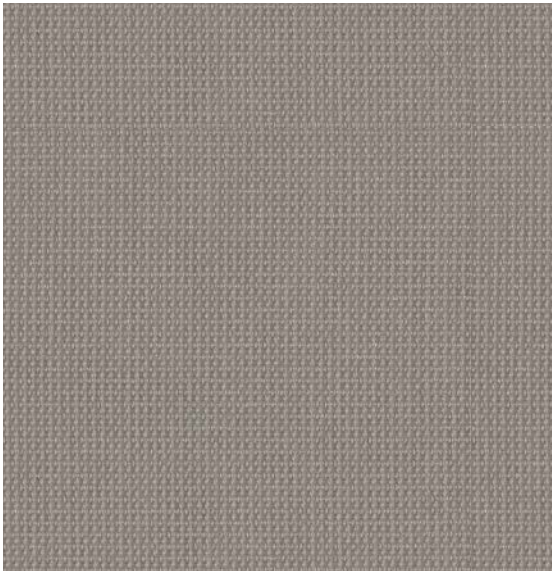
Wit Mesh



Desert



Lemon



Fog



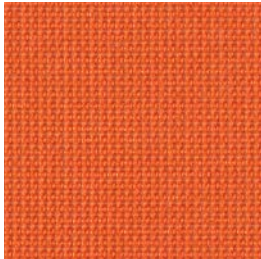
\*Woven Striped, Fog

Pattern: Wit Mesh

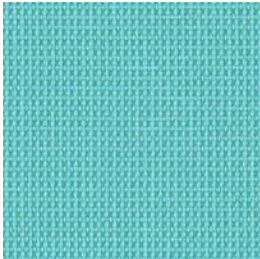
68% Polyester  
32% Elatomer

Abrasion:  
100,000 Double Rubs

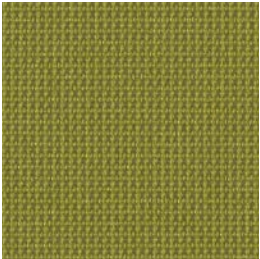
Bleach Cleanable



Tangerine



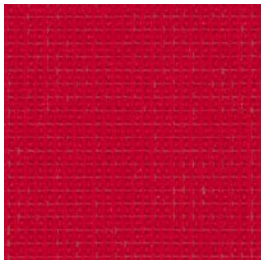
Aqua



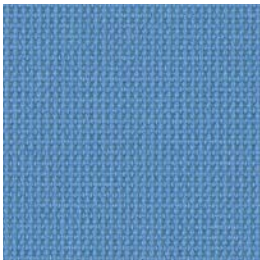
Apple



\*Woven Striped, Frost



Fire



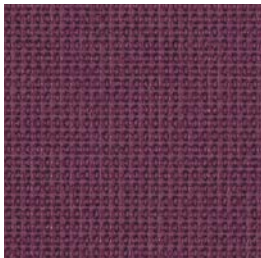
Ocean



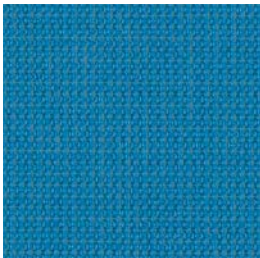
Nickel



\*Woven Striped, Nickel



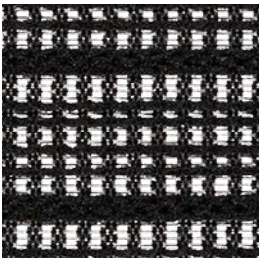
Grape



Electric Blue



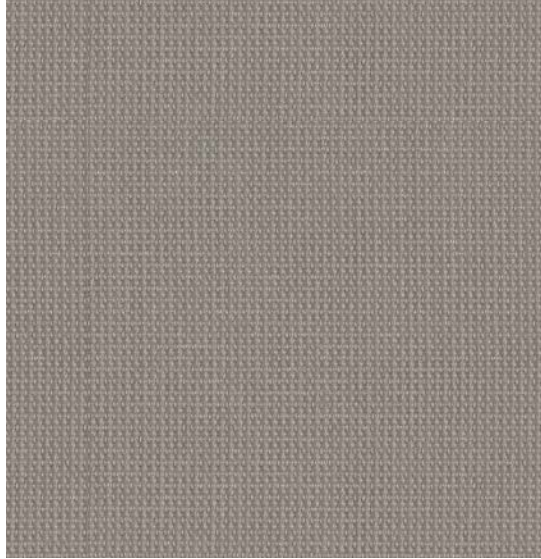
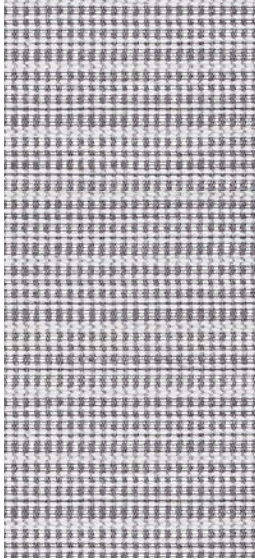
Onyx








\*Woven Striped, Onyx

\*Not available on Wit side

<b>Pattern</b>	Wit Mesh
<b>Content</b>	68% Polyester, 32% Elastomeric
<b>Width</b>	54"



<b>Abrasion</b>	100,000 Double Rubs
<b>Applicable ACT®</b>	    
<b>Cleaning Code</b>	WS/BC: 10:1 WS: Water based foam or cleaner BC: Bleach cleanable 10:1 <b>BLEACH</b> Cleanable
<b>Samples</b>	To order samples, call (888) 274-8664 or visit sitonit.net

## Icon upholstery definitions



### Fire Retardency

Flammability testing determines a fabric's resistance to burning. Passes Cal 117.



### Colorfastness to Wet and Dry Crocking

The rubbing off of color from fabric onto clothing, hands or other materials can occur under wet or dry conditions. Passes AATCC 8-1974 Dry Crocking. Class 4 minimum, Wet Crocking. Class 3 minimum.



### Colorfastness to Light

The degree to which fabric will retain its color when exposed to light. Passes AATCC 16A-1974 or AATCC 16E-1976. Class 4 minimum at 40 hours. Note: Class 4 minimum at 60 hours is recommended for direct sunlight exposure.



### Physical Properties

Brush Pill Test to determine a fabric's pilling, Breaking/Tensile Strength Test determines the ability of a fabric to withstand tension without breaking or tearing. Seam Slippage Test determines pulling apart of fabrics at the seams. Passes Brush Pill ASTM D3511, 3-4 minimum, Breaking Strength ASTM D3597-D1682 (1975) 50 lbs. minimum in warp & weft, Seam Slippage ASTM D3597-D434-75 25 lbs. minimum warp & weft.



### Abrasion

The ability of a fabric to withstand damage from wear or rubbing. Passes Heavy Duty Contract ASTM 3597 modified (No. 10 cotton duck); 30,000 double rubs Wyzenbeek Method or ASTM 4966 modified (with 21 oz. wt.); 40,000 rubs Martindale Method.

SitOnIt • Seating®



(888) 274-8664

(714) 995-4855 Fax

sitonit.net

sales@sitonit.net

## Showroom Locations

### Los Angeles

6415 Katella Avenue  
Cypress, CA 90630

### Chicago

222 Merchandise Mart Plaza  
Suite 1150  
Chicago, IL 60654

### New York City

11 East 26th  
New York, NY 10010