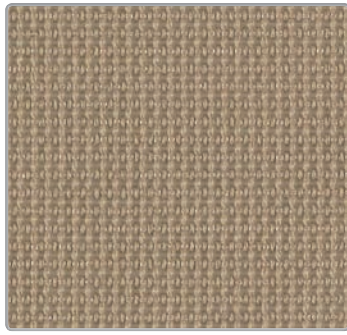
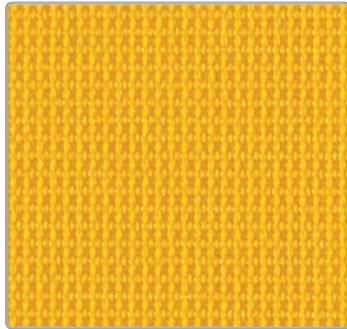


# SitOnIt • Seating®

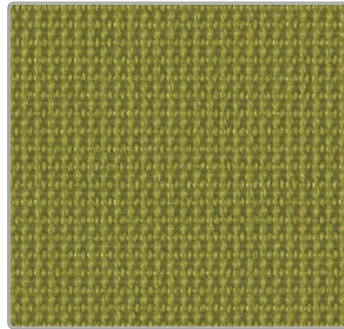
Movi / Novo / Qwiz Mesh



Desert



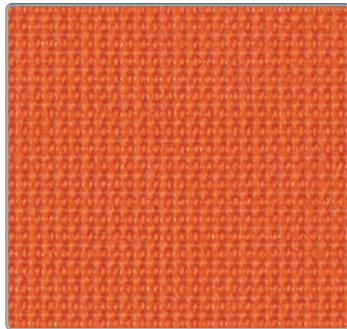
Lemon



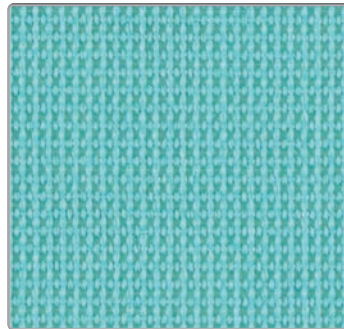
Apple



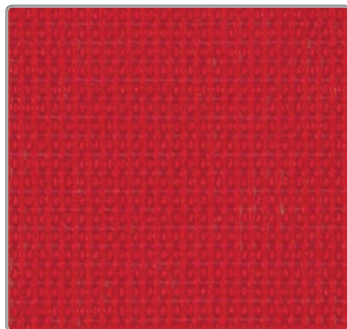
Fog



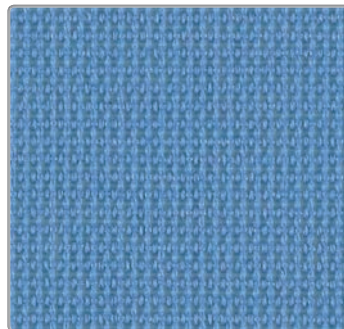
Tangerine



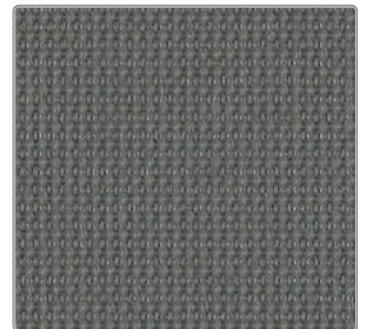
Aqua



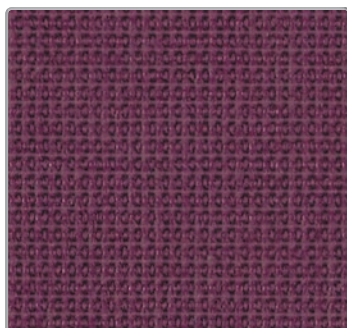
Fire



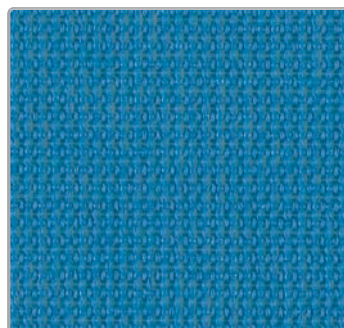
Ocean



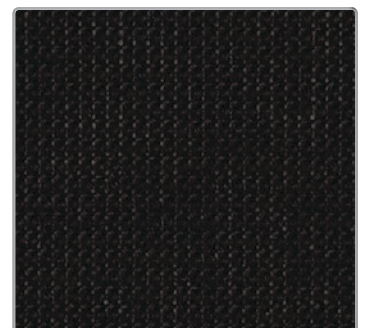
Nickel



Grape



Electric Blue



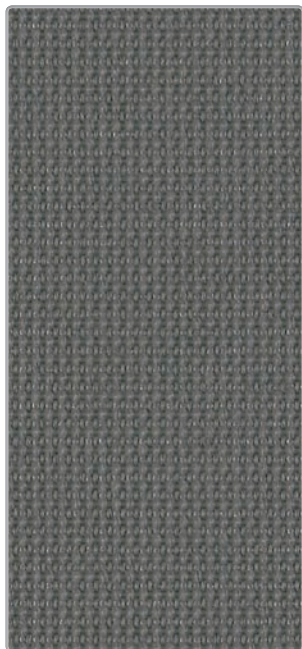
Onyx






Pattern: Movi / Novo /  
Qwiz Mesh

68% Polyester,  
32% Poly Elastomeric

Abrasion:  
100,000 Double Rubs

Bleach cleanable



<b>Pattern</b>	Movi / Novo / Qwiz Mesh
<b>Content</b>	68% Polyester, 32% Elastomeric
<b>Width</b>	54"
<b>Abrasion</b>	100,000 Double Rubs
<b>Applicable ACT®</b>	    
<b>Cleaning Code</b>	WS/BC: 10:1 WS: Water based foam or cleaner BC: Bleach Cleanable 10:1
<b>Samples</b>	To order samples, call (888) 274-8664 or visit <a href="http://sitonit.net">sitonit.net</a>

#### icon upholstery definitions



##### **Fire Retardancy**

Flammability testing determines a fabric's resistance to burning. Passes Cal 117.



##### **Colorfastness to Wet and Dry Crocking**

The rubbing off of color from fabric onto clothing, hands or other materials and can occur under wet or dry conditions. Passes AATCC 8-1974 Dry Crocking. Class 4 minimum, Wet Crocking. Class 3 minimum.



##### **Colorfastness to Light**

The degree to which fabric will retain its color when exposed to light. Passes AATCC 16A-1974 or AATCC 16E-1976. Class 4 minimum at 40 hours  
Note: Class 4 minimum at 60 hours is recommended for direct sunlight exposure.



##### **Physical Properties**

Brush Pill Test to determine a fabric's pilling. Breaking/Tensile Strength Test determines the ability of a fabric to withstand tension without breaking or tearing. Seam Slippage Test determines the pulling apart of fabrics at the seams. Passes Brush Pill ASTM D3511, 3-4 minimum, Breaking Strength ASTM D3597-D1682-64 (1975) 50 lbs. minimum in warp & weft, Seam Slippage ASTM D3597-D434-75 25 lbs. minimum in warp & weft.



##### **Abrasion**

The ability of a fabric to withstand damage from wear and rubbing. Passes Heavy Duty Contract ASTM 3597 modified (No.10 cotton duck); 30,000 double rubs Wyzenbeek Method or ASTM 4966 modified (with 21 oz. wt.); 40,000 rubs Martindale Method.

**SitOnIt • Seating®**

(888) 274-8664

(714) 995-4855 Fax

[sitonit.net](http://sitonit.net)

[sales@sitonit.net](mailto:sales@sitonit.net)

#### Showroom Locations

##### **Los Angeles**

6415 Katella Avenue  
Cypress, CA 90630

##### **Chicago**

222 Merchandise Mart Plaza  
Suite 1150  
Chicago, IL 60654

##### **New York City**

11 East 26th  
New York, NY 10010