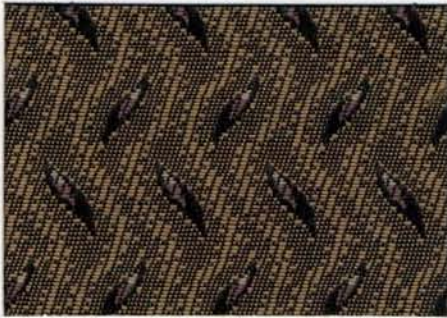


MULTIPLICITY SYSTEM



SASSY SAND



CHESS EBONY

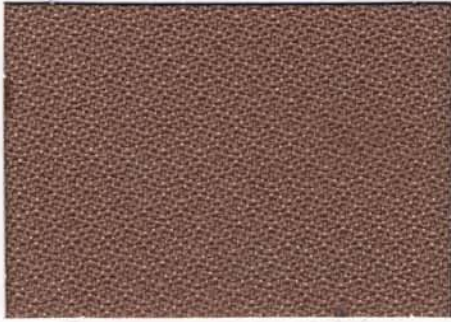


INTERVAL TAUPE



ERA CHAR





MULTIPLICITY SYSTEM



MYTH



STEEL



SODALITE



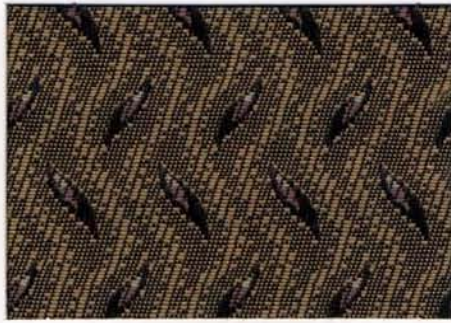
INDIGO



GARNET



JET



SASSY SAND



GLOW



BLUE



PURPLE



CELADON



BERRY



CHARCOAL



CHESS EBONY



FOREST



EGGPLANT



SUMMIT



PERIWINKLE



MIDNIGHT



PORT



INTERVAL TAUPE



THYME



AUTUMN



AUBERGINE



RIVER



GRAPHITE



SUNSET



ERA CHAR



STONE



BASIL



CONCORD



PINE



INK



MERLOT

Essentials...

Tasteful offerings, uncommon value

Sultans of SpeedSM

Time. It's important to you. It's important to us.
Fastest delivery in the industry. Bar none.

It Fits

Your chair, your way. Visco elastic foam,
individual controls, and total flexibility. Take a ride.

Non-Stop Service

Our people make it happen. Every order, every day.
Complete and on time.

Dream Team

Knoll Textiles, Momentum, Spinneybeck.

We partner with the best to deliver uncompromised
design and value.

we get itSM



essentials™

technical information

Width / Pattern	Content / Backing	Finish	Abrasion	Lightfastness	Repeats	Additional Data	Cleaning Code	Grade	Applicable ACT
54" CHESS	100% Polyester Acrylic Backing	Proprietary Stain Resistance	192,000	40 Hrs. Class 5	1/4" V 1/2" H		WS	2	
54" ERA	85% Polyester, 15% Viscose Rayon Acrylic Backing	Teflon®	100,000	40 Hrs. Class 4	(none)		D	2	
54" INTERVAL	100% Polyester Acrylic Backing	Proprietary Stain Resistance	50,000	40 Hrs. Class 5	3/4" V 3/4" H		WS	2	
54" MULTIPLICITY	100% Polyester Acrylic Backing	Proprietary Stain Resistance	210,000	40 Hrs. Class 4.5	(none)		WS	1	
54" SASSY	100% Polyester Acrylic Backing	Proprietary Stain Resistance	30,000	40 Hrs. Class 5	1" V 1/2" H	Directional Pattern	WS	1	

memo samples

Memo samples are available. Please call Momentum at
800-366-6839

M O M E N T U M
T E X T I L E S

icon upholstery definitions



Fire Retardancy

Flammability testing determines a fabric's resistance to burning. Passes Cal 117.



Colorfastness to Wet and Dry Crocking

The rubbing off of color from the fabric onto clothing, hands, or other materials and can occur under wet or dry conditions. Passes AATCC 8-1974. Dry Crocking, Class 4 minimum, Wet Crocking, Class 3 minimum.



Colorfastness to Light

The degree to which fabric will retain its color when exposed to light. Passes AATCC 16A-1974 or AATCC 16E-1976. Class 4 minimum at 40 hours. Note: Class 4 minimum at 60 hours is recommended for direct sunlight exposure.



Physical Properties

Brush Pile Test to determine a fabric's pilling, Breaking/Tensile Strength Test determines the ability of a fabric to withstand tension without breaking or tearing. Seam Slippage Test determines the pulling apart of fabrics at the seams. Passes Brush Pile ASTM D3511, 3-4 minimum, Breaking Strength ASTM D3597-D1682-64 (1975) 50 lbs. minimum in warp & weft, Seam Slippage ASTM D3597-D434-75 25 lbs. minimum warp & weft.



Abrasion

The ability of a fabric to withstand damage from wear and rubbing. Passes Heavy Duty Contract ASTM 3597 modified (No. 10 cotton duck); 30,000 double rubs Wyzenbeek Method or ASTM 4966 modified (with 21 oz. wt.); 40,000 rubs Martindale Method.

cleaning code definitions

D: Dry clean only.

WS: Clean with water-based cleaning agents, foam or pure water-free solvents. (Energine, Carbona, Renuzit or other similar products). Vacuuming or light brushing is recommended to prevent dust and soil buildup.



888.274.8664

714.995.4855

sales@sitonit.net

6415 Katella Avenue, Suite 200

Cypress, CA 90630