

SPECIFICATIONS

PATTERN:	Allure
PRICE:	FG 4
LEAD TIME:	Task/Executive/Side: 2-day; Lounge: 10-day
WARRANTY:	5 years
AVAILABILITY:	Approved for use on all seating models except Achieve.

CHARACTERISTICS

Content:	100% vinyl
Finish:	ResilienceSR
Backing:	100% polyester
Width:	54"
Pattern Repeat Size:	N/A
Weight Per Linear Yard:	30 oz
Cleaning Code:	WS / BC (1:10)
Country of Origin:	Taiwan

PERFORMANCE

Abrasion:	200,000 D.R.
Seam Slippage (Warp):	72.5 lbs
Tensile Strength (Warp):	8.4 lbs
Flammability:	CA TB117-2013 UFAC Class 1 NFPA 260 Class 1 ASTM E84 IMO A.652

Colorfastness to Light Rating:	4.5
Lightfastness:	200 hours
Crocking, Dry:	Class 5
Piling Resistance:	Class 5
Note:	Multiple factors affect fabric durability and appearance retention, including end-user application and proper maintenance. Wyzenbeek results above 100,000 double rubs have not been shown to be an indicator of increased lifespan.



ENVIRONMENTAL

Phthalate Free (includes all Phthalates listed in CAL Prop 65 & CPSIA)
Lead Free
BPA Free
TRIS Free
Formaldehyde Free
Does not contain Conflict Minerals

CARE + MAINTENANCE GUIDE

GENERAL MAINTENANCE RECOMMENDATIONS

- Clean and maintain your furniture regularly.
- A professional cleaning service is recommended.
- Do not saturate the furniture with liquids.
- Treat stains quickly. The stain will become increasingly more difficult to remove the longer it sits.
- Pretest any cleaning method or agent in an inconspicuous area of the furniture before using in a visible location.

STAIN AND DISINFECTANT RECOMMENDATIONS

Regular cleaning and maintenance:

Clean the soiled area with mild soap and water, then rinse with fresh water and wipe dry with a clean cloth.

For food stains such as ketchup, chocolate, coffee, or tea:

Wipe affected area with a soft cloth or soft bristle brush using a non-abrasive cleaner, for example Formula 409™ or Fantastik™. Rinse with fresh water and wipe dry.

For difficult stains such as make up, lipstick, crayon or grease:

Clean the soiled area with 50% solution of Isopropyl Alcohol (Rubbing Alcohol) and water. It is important to rinse the cleaned area with fresh water after applying the alcohol solution.

For Healthcare stains, such as blood, urine, or betadine:

Clean/Disinfect the soiled area with a 10% solution of Household Bleach and water. It is important to rinse the cleaned area with fresh water after applying the bleach solution.

Note:

Residue left by cleaning agents will degrade and shorten the life and/or affect the product's appearance if not removed.

RESILIENCE SR FINISH EXPLAINED

Materials treated with ResilienceSR can be easily cleaned and will guard against stain maintaining the desired surface appearance for years to come. They are also engineered to inhibit bacterial growth, as well as fungus, mold, and spores, resulting in a more hygienic environment. ResilienceSR also provides additional wear properties and surface durability to increase the life of the material. The finish is not visible and it doesn't effect the hand of the material.

APPROVED CLEANERS

This list represents some of the most common options available and is not intended to be comprehensive.

Clorox Disinfecting Wipes
Clorox Hydrogen Peroxide Disinfectant
Diluted Bleach (1:10)
Greenworks All Purpose Cleaner
Isopropyl Alcohol
Neutral Disinfectant Cleaner
Oxivir TB
Sani Cloth HB
Virex II 256

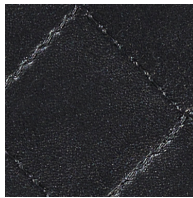
REJECTED CLEANERS

The following cleaners have been tested and DO show effects to the material when used. We DO NOT recommend the use of these cleaners.

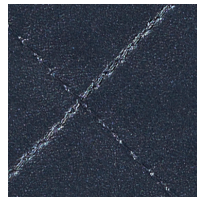
Asepticare TB-II
Birex SE Disinfectant
Cavicide
Caviwipes
Clorox Broad Spectrum
Clorox Healthcare Bleach Germicidal Wipes
Clorox Healthcare Hydrogen Peroxide Wipes
Clorox EZ Kill Wipes
Citrace Germicide
Fade-A-Dyne II
Formula 409
Fantastik
HealthLink EX Kill Wipes
Lysol Spray
Lysol Foaming Disinfectant Cleaner
Optim 33TB
Oxycide
Precise Spray
Sani Cloth Plus
SaniZide Plus Germicidal Solutions
Simple Green
Super Sani-Cloth with bleach
Super Sani-Cloth
Super Sani-Cloth AF3
Wex-Cide 128
Virox AHP 5 Disinfectant Cleaner Surface Wipes



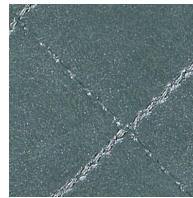
FLAGSTONE



ONYX



COSMIC



CABO



MICA