

SPECIFICATIONS

| | |
|----------------------|--|
| PATTERN: | Coronado |
| PRICE: | FG 2 |
| LEAD TIME: | Task/Executive/Side: 2-day; Lounge: 10-day |
| WARRANTY: | 5 years |
| AVAILABILITY: | Approved for use on all seating models. |

CHARACTERISTICS

| | |
|--------------------------------|----------------|
| Content: | 100% Polyester |
| Finish: | Clean Coat |
| Backing: | 100% polyester |
| Width: | 55" |
| Pattern Repeat Size: | N/A |
| Weight Per Linear Yard: | 14.9 oz |
| Cleaning Code: | WS |
| Country of Origin: | China |

PERFORMANCE

| | |
|---------------------------------------|--|
| Abrasion: | 100,000 D.R. |
| Seam Slippage (Warp): | 80 lbs |
| Tensile Strength (Warp): | 338 lbs |
| Flammability: | CA TB117-2013 Class 1 UFAC Class 1 NFFPA Class 1 |
| Colorfastness to Light Rating: | 4 |
| Lightfastness: | 40 hours |
| Crocking, Dry: | Class 4.5 |
| Piling Resistance: | Class 4 |
| Note: | Multiple factors affect fabric durability and appearance retention, including end-user application and proper maintenance. Wyzenbeek results above 100,000 double rubs have not been shown to be an indicator of increased lifespan. |



ENVIRONMENTAL

Healthier Hospitals compliant

CARE + MAINTENANCE GUIDE

GENERAL MAINTENANCE RECOMMENDATIONS

- Clean and maintain your furniture regularly.
- A professional cleaning service is recommended.
- Do not saturate the furniture with liquids.
- Treat stains quickly. The stain will become increasingly more difficult to remove the longer it sits.
- Pretest any cleaning method or agent in an inconspicuous area of the furniture before using in a visible location.

CLEANING RECOMMENDATIONS

Recommended Cleaning Solution: Mixture of Tide® or Oxiclean® and warm water (1 teaspoon of soap for every 16 ounces water).

For most water-based stains, a clean, absorbent cloth dampened with a detergent solution (e.g. 1 teaspoon laundry detergent/1 pint warm water) should be applied to the stain. Before applying the solution, carefully scrape away any dried-on materials. Blot the fabric with the treated cloth, working from the outer edge of the stained area moving inward. In order to effectively draw out the stain, replace the cleaning cloth frequently. Rinse well with clear water, and dry the fabric as quickly as practical. Avoid over-wetting the fabric with cleaning fluid or water so as not to damage underlying materials: several light applications of cleaning solution are preferred.

Oil-based stains may be treated in a similar manner, substituting a volatile solvent-based cleaner for the detergent solution.

Wet vacuum machines should not be used as they can leave water rings or traces of shampoo that can affect the appearance and performance qualities of the fabric.

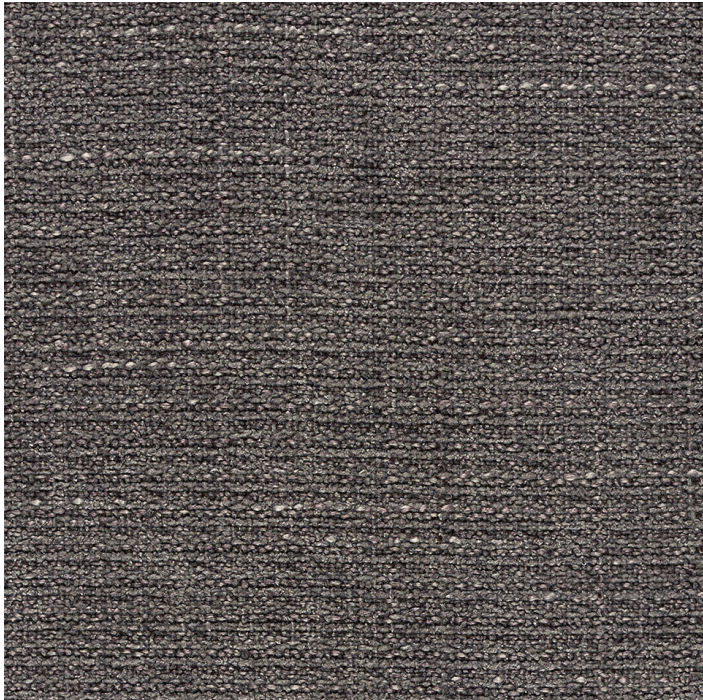
After cleaning, the fabric should be allowed to dry completely. No heat should be used.

Note:

Residue left by cleaning agents will degrade and shorten the life and/or affect the product's appearance if not removed.

CLEAN COAT FINISH EXPLAINED

Coronado has a Clean Coat finish. This finish is an invisible, topical application that prevents liquids and stains from penetrating into the fibers of the material.



MUSSEL



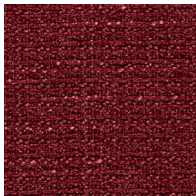
CINDER



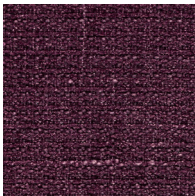
OAT



IVORY



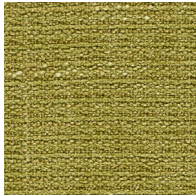
BRICK



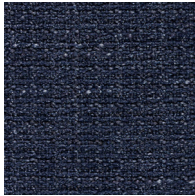
VIOLET



CHAMPAGNE



GREEN



NAVY