

SPECIFICATIONS

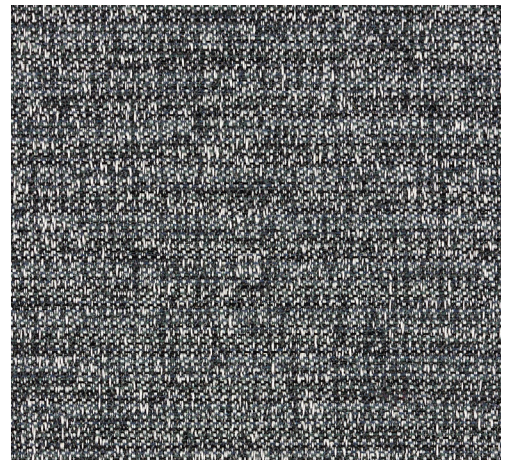
PATTERN:	Motion
PRICE:	FG 3
WARRANTY:	5 years
AVAILABILITY:	Approved for use on all seating models.

CHARACTERISTICS

Content:	57% post-consumer recycled polyester 19% pre-consumer recycled polyester 12% pre-consumer recycled nylon 12% nylon
Finish:	Crypton
Backing:	Crypton Moisture Barrier
Width:	54"
Pattern Repeat Size:	.125" H x .125" W
Weight Per Linear Yard:	11.9 oz
Cleaning Code:	WS
Country of Origin:	Canada

PERFORMANCE

Abrasion:	100,000 D.R.
Seam Slippage (Warp):	55 lbs
Tensile Strength (Warp):	180 lbs
Flammability:	CA TB117-2013 Section 1 UFAC Class 1 NFPA 260 Class 1
Colorfastness to Light Rating:	4
Lightfastness:	40 hours
Crocking, Dry:	Class 4
Piling Resistance:	Class 4
Note:	Multiple factors affect fabric durability and appearance retention, including end-user application and proper maintenance. Wyzenbeek results above 100,000 double rubs have not been shown to be an indicator of increased lifespan.



ENVIRONMENTAL

Made in the USA.
Made with post- and pre-consumer recycled material.

CARE + MAINTENANCE GUIDE

GENERAL MAINTENANCE RECOMMENDATIONS

- Clean and maintain your furniture regularly.
- A professional cleaning service is recommended.
- Do not saturate the furniture with liquids.
- Treat stains quickly. The stain will become increasingly more difficult to remove the longer it sits.
- Pretest any cleaning method or agent in an inconspicuous area of the furniture before using in a visible location.

CLEANING RECOMMENDATIONS

Most liquids simply roll off of Crypton fabrics, or they can be quickly blotted off the surface with a dry towel or sponge. The spot cleaning method of stain removal can be used for most light to medium stains, such as coffee, red wine, crayon, and ketchup. Be careful to brush lightly since fibers can be broken or matted during the cleaning process.

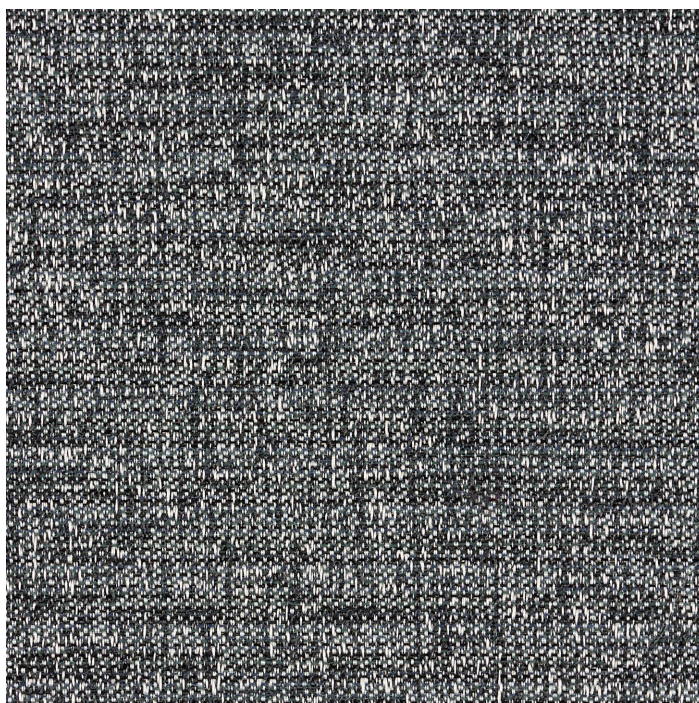
1. Before spot cleaning, blot up liquids on the surface with a clean, soft towel and brush off any loose dirt.
2. Prepare a cleaning solution of 1/4 tsp mild, enzyme detergent, such as Tide®, Woolite® or Dawn® dishwashing liquid, per 1 cup of lukewarm water.
3. Apply the cleaning solution using a misting spray bottle. Do NOT oversaturate when applying the cleaning solution.
4. Work the solution into the affected area by lightly scrubbing the area with a sponge or soft bristle brush. Make sure to work from the outside of the stain inward so as not to spread the stain and rinse your sponge or brush frequently.
5. Allow cleaning solution to soak into the fabric.
6. Rinse thoroughly to remove all soap residues, as residues will attract dirt. Blot excess moisture with a clean, soft towel or sponge.
7. Repeat steps 3-6 as needed.
8. Allow fabric to air dry.

Note:

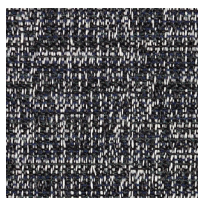
Residue left by cleaning agents will degrade and shorten the life and/or affect the product's appearance if not removed.

CRYPTON FINISH EXPLAINED

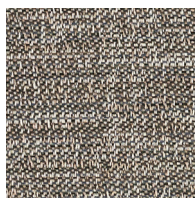
Crypton uses a patented system to encase textile fibers with a proprietary copolymer formula. Crypton offers stain, moisture, mold, mildew, bacteria and odor-resisting protection. It is a finish that is applied during the weaving process, rather than as a topical coat.



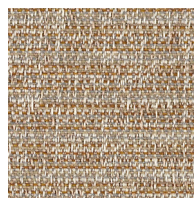
GRAPHITE



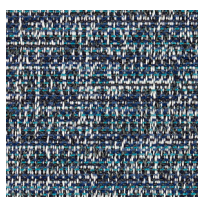
CARBON



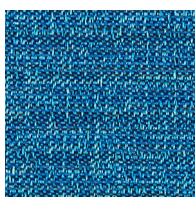
MIST



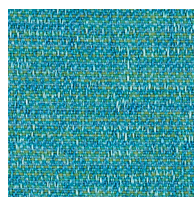
OATMEAL



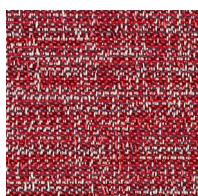
MIDNIGHT



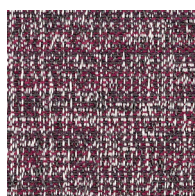
SAPPHIRE



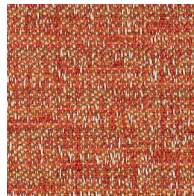
PEACOCK



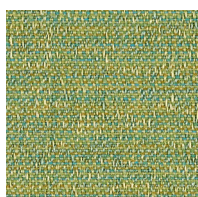
SCARLET



GRAPE



PAPRIKA



GRASS