

SPECIFICATIONS

PATTERN:	Newport
PRICE:	FG 4
LEAD TIME:	Task/Executive/Side: 2-day; Lounge: 10-day
WARRANTY:	5 years
AVAILABILITY:	Approved for use on all seating models.

CHARACTERISTICS

Content:	95% Wool, 5% Nylon
Finish:	None
Backing:	None
Width:	54"
Pattern Repeat Size:	N/A
Weight Per Linear Yard:	11.75 oz
Cleaning Code:	WS
Country of Origin:	United Kingdom

PERFORMANCE

Abrasion:	100,000+ D.R.
Seam Slippage (Warp):	25 lbs
Tensile Strength (Warp):	112 lbs
Flammability:	CA TB117 UFAC Class 1 NFFPA 701 ASTM E84 Class 1
Colorfastness to Light Rating:	5
Lightfastness:	40 hours
Crocking, Dry:	Class 4
Piling Resistance:	Class 3
Note:	Multiple factors affect fabric durability and appearance retention, including end-user application and proper maintenance. Wyzenbeek results above 100,000 double rubs have not been shown to be an indicator of increased lifespan.



CARE + MAINTENANCE GUIDE

GENERAL MAINTENANCE RECOMMENDATIONS

- Clean and maintain your furniture regularly.
- A professional cleaning service is recommended.
- Do not saturate the furniture with liquids.
- Treat stains quickly. The stain will become increasingly more difficult to remove the longer it sits.
- Pretest any cleaning method or agent in an inconspicuous area of the furniture before using in a visible location.

STAIN AND DISINFECTANT RECOMMENDATIONS

Try step A first, applying small quantities of liquid and blotting well with clean tissues after each application. Work carefully to remove the stain from the outside in and allow to dry. If the stain is still apparent, try step B and later C.

STAIN TYPE	A	B	C
Alcoholic drinks	9	11	7
Blood	5, 8	3	7
Butter	14, 15	1, 2	3
Chewing gum	14	2, 4	16
Chocolate	3	1	
Coffee	13	11	3
Cola/soft drinks	9	7	
Fruit Juice	7	3	6, 3
Furniture Polish	1	3	2
Gravy/sauce	3	1	7
Ink (biro)	6	4	10
Ink (felt tip pen)	6	4	3
Ink (writing)	3	16	
Jam	3	7	
Lipstick	1	2	3
Milk	8	3	7
Nail Varnish	4	16	
Oil & Grease	1	2	3
Paint (oil based)	1	3	16
Paint (water based)	5	3	16
Shoe polish	1	2	3
Tea	3	11	7
Urine	3	12	16
Vomit	3	12	16
Wine	3	13	11

Key of treatments

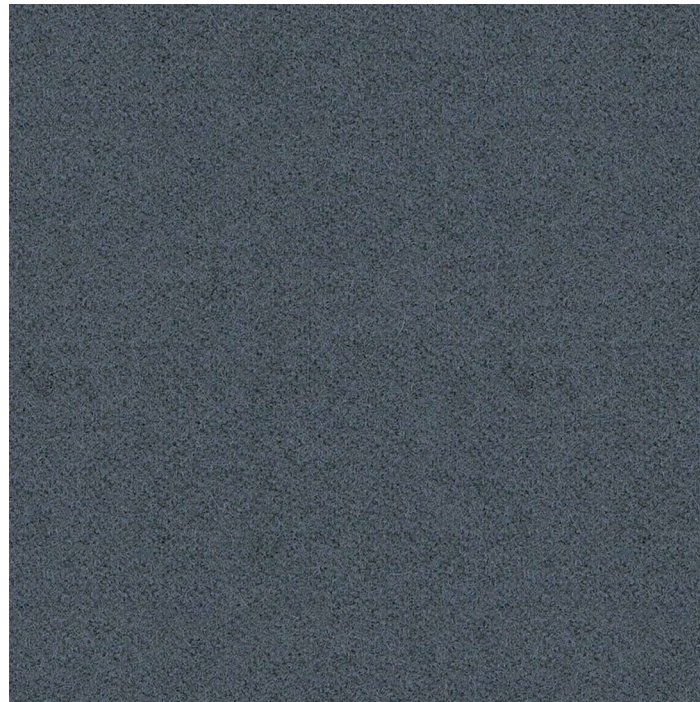
1. White spirit, Turpentine or substitute
2. Dry cleaning fluid (1,1,1, Perchloroethylene)
3. Upholstery detergent or shampoo at recommended dilution
4. Acetone, nail polish remover – non oily
5. Cold water
6. Surgical spirit (alcohol)
7. Borax 2% solution, dissolve 1 teaspoonful in warm water, fill cup with cold water

Key of treatments (continued)

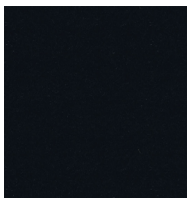
8. Salt 2% solution, 1 level teaspoon in a cup of lightly warm water
9. Use 3 as above plus a drop of spirit vinegar
10. Biological detergent 1% solution (1 level tsp in cup of warm water)
11. Use 6 as above diluted with 1:5 water
12. Disinfectant, dilute as recommended on bottle, or 1 tsp in 2 pints of water
13. Use 7 as above plus a drop of spirit vinegar
14. Chill with ice cubes in a plastic bag
15. Hot iron over layers of white tissue
16. Consult a professional cleaner

Note:

Residue left by cleaning agents will degrade and shorten the life and/or affect the product's appearance if not removed.



NICKEL



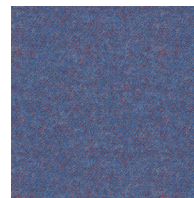
ONYX



SPACE



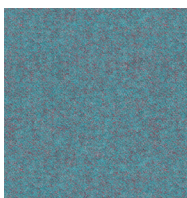
STONE



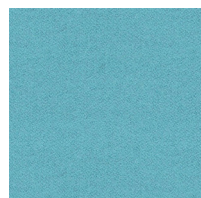
MYSTIC



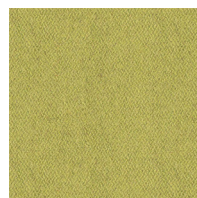
POOL



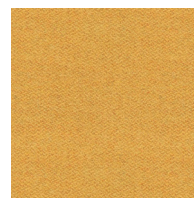
SEAFOAM



AQUA



APPLE



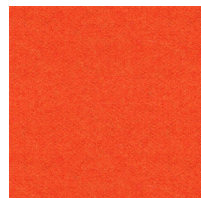
LEMON



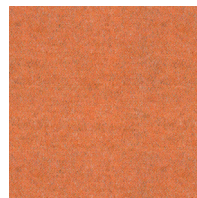
MARS



FIRE



TANGERINE



CRUSH



SAND