

SPECIFICATIONS

PATTERN:	Paintbrush
PRICE:	FG 2
LEAD TIME:	2-day
WARRANTY:	5 years
AVAILABILITY:	Approved for use on all seating models.

CHARACTERISTICS

Content:	70% Pre-Consumer Poly, 30% Post-Consumer Poly
Finish:	N/A
Backing:	Acrylic
Width:	54"
Pattern Repeat Size:	14.2" H x 9.5" W
Weight Per Linear Yard:	11.8 oz
Cleaning Code:	WS / BC (10:1)
Country of Origin:	Canada

PERFORMANCE

Abrasion:	90,000 D.R.
Seam Slippage (Warp):	76 lbs
Tensile Strength (Warp):	158 lbs
Flammability:	CA TB117-2013 NFPA 260-2003

Colorfastness to Light Rating:	4-5
Lightfastness:	40 hours
Crocking, Dry:	Class 4
Piling Resistance:	Class 4
Note:	Multiple factors affect fabric durability and appearance retention, including end-user application and proper maintenance. Wyzenbeek results above 100,000 double rubs have not been shown to be an indicator of increased lifespan.



ENVIRONMENTAL

Healthier Hospitals (HHI) Compliant
FR Free
California PROP 65 Compliant
No Formaldehyde



CARE + MAINTENANCE GUIDE

GENERAL MAINTENANCE RECOMMENDATIONS

- Clean and maintain your furniture regularly. Wipe or vacuum your furniture once a week.
- A professional cleaning service is recommended.
- Do not saturate the furniture with liquids.
- Treat stains quickly. The stain will become increasingly more difficult to remove the longer it sits.
- Pretest any cleaning method or agent in an inconspicuous area of the furniture before using in a visible location.
- Do not place furniture in direct sunlight for long periods of time.
- Do not store in wet places for long periods of time. This will accelerate the aging of furniture

STAIN AND DISINFECTANT RECOMMENDATIONS

Recommended Cleaning Solution: Mixture of Tide® or Oxiclean® and warm water (1 teaspoon of soap for every 16 ounces water)

Wipe off spills with a tissue and then use a clean cloth moistened with water to wipe until it is clean. It is important to wipe the surface with a dry cloth or tissue to remove any remaining moisture.

If the spill has evolved into a stain, a mixture of mild soap and water should be used to remove the stain. Dampen a cloth with the mixture and gently work the stain in a circular motion. Avoid rubbing the affected area aggressively and be sure not to over saturate the fabric. After the stain is removed, dampen a cloth with water only and wipe away any excess soap left behind, then wipe the surface with a dry cloth to remove any remaining moisture.

***For tougher, non-liquid spills, such as mustard, mayonnaise, sunscreen, etc.,** remove the excess contaminant from the surface of the fabric before cleaning. If the spill has dried, a soft brush or butter knife should be used to remove the dried contaminants before any liquid cleaning treatment is performed. After the contaminants have been removed, proceed with the cleaning method above.

***For Healthcare stains, such as Blood, Urine, Disinfectant, etc.,** wipe off by moisture cloth, spray the hypochlorite type disinfectant. Wipe with moist cloth again, finally wipe down with a dry cloth to remove any remaining moisture.

Using a solvent: The use of solvents may be necessary when all other cleaning methods have been exhausted, and the stain remains. Spray the solvent directly onto the stain and allow it to sit for 2-3 minutes, avoid over-saturating the fabric. Gently work the stain in a circular motion, and be sure to avoid rubbing the infected area aggressively. After cleaning, make sure to wipe the fabric down with a damp cloth to remove any excess cleaning solution, and then wipe down with a dry cloth to remove any remaining moisture. If it is found that the furniture is soaked in the cleaning process, please wipe it with a dry cloth and air dry it naturally.

APPROVED CLEANERS

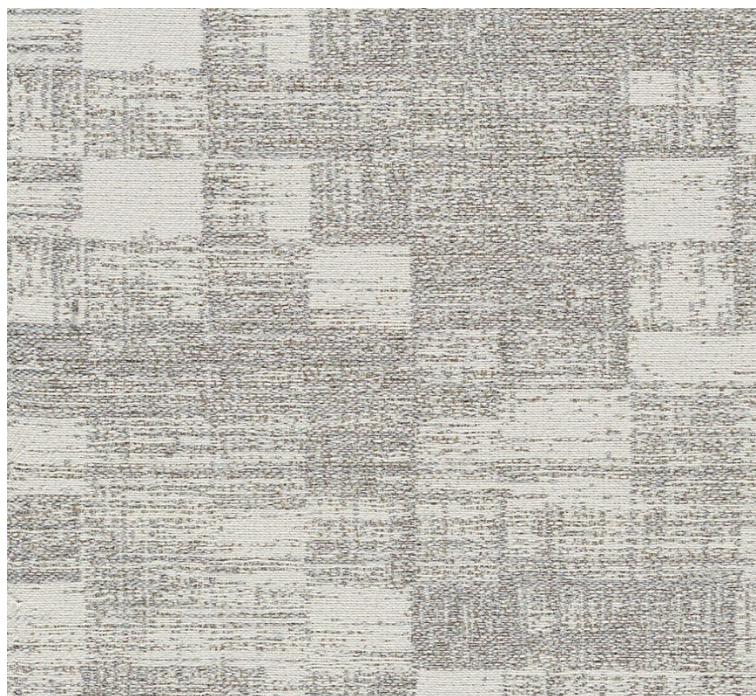
This list represents some of the most common options available and is not intended to be comprehensive.

Bleach-based cleaners (10% bleach to water solution)

Hydrogen peroxide-based cleaners

Alcohol-based cleaners

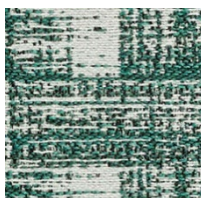
Quaternary ammonium (quat)-based cleaners



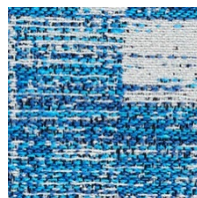
PEWTER



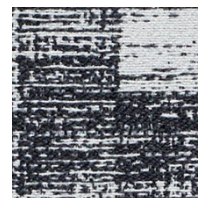
SAND



FOREST



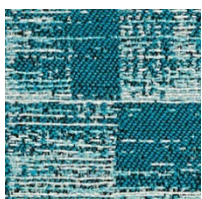
AZURE



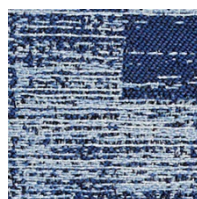
ORCA



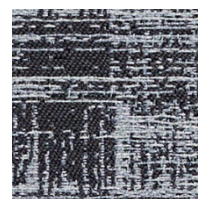
CHERRY



AEGEAN



DENIM



INK