

## SPECIFICATIONS

<b>PATTERN:</b>	Pop
<b>PRICE:</b>	FG 2
<b>LEAD TIME:</b>	<b>Task/Executive/Side:</b> 2-day; <b>Lounge:</b> 10-day
<b>WARRANTY:</b>	5 years
<b>AVAILABILITY:</b>	Approved for use on all seating models.

## CHARACTERISTICS

<b>Content:</b>	100% Post-Consumer Recycled Polyester
<b>Finish:</b>	Water Repellent
<b>Backing:</b>	Latex
<b>Width:</b>	58"
<b>Pattern Repeat Size:</b>	N/A
<b>Weight Per Linear Yard:</b>	12.6 oz
<b>Cleaning Code:</b>	WS
<b>Country of Origin:</b>	China

## PERFORMANCE

<b>Abrasion:</b>	200,000 D.R.
<b>Seam Slippage (Warp):</b>	Unavailable
<b>Tensile Strength (Warp):</b>	Unavailable
<b>Flammability:</b>	CA TB117 Sec. E UFAC Class 1 NFFPA 260 Class 1

**Colorfastness to Light Rating:** 4

**Lightfastness:** 40 hours

**Crocking, Dry:** Class 4.5

**Piling Resistance:** Class 5

**Note:** Multiple factors affect fabric durability and appearance retention, including end-user application and proper maintenance. Wyzenbeek results above 100,000 double rubs have not been shown to be an indicator of increased lifespan.



## CARE + MAINTENANCE GUIDE

### GENERAL MAINTENANCE RECOMMENDATIONS

- Clean and maintain your furniture regularly.
- A professional cleaning service is recommended.
- Do not saturate the furniture with liquids.
- Treat stains quickly. The stain will become increasingly more difficult to remove the longer it sits.
- Pretest any cleaning method or agent in an inconspicuous area of the furniture before using in a visible location.

### STAIN AND DISINFECTANT RECOMMENDATIONS

Spot clean only with water based upholstery shampoo or foam cleaner. Pretest a small inconspicuous area before proceeding.

Do not over wet. Do not use solvents to spot clean. Cushion covers should not be removed and laundered.

To prevent overall soiling, frequent vacuuming or light brushing with a non-metallic, soft bristle brush to remove dust and grime is recommended.

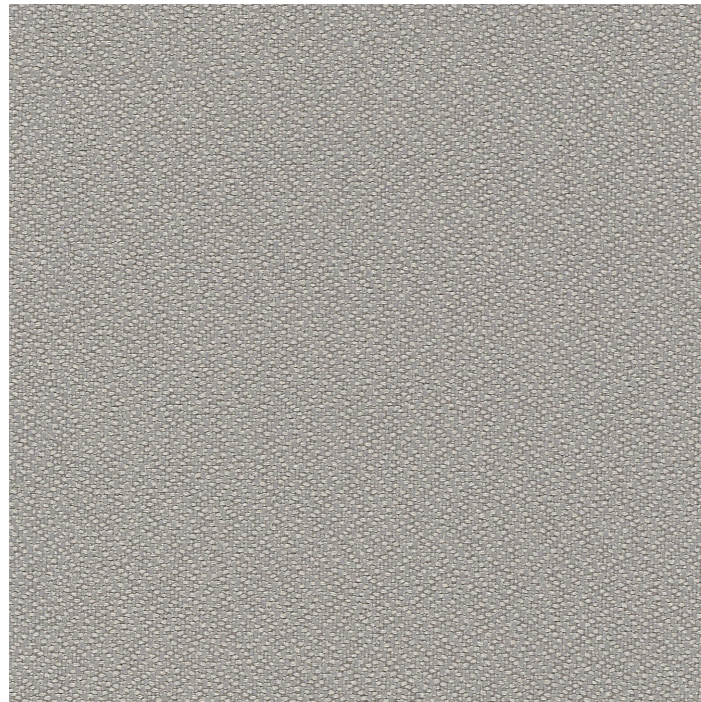
When cleaning a spill, blot immediately to remove spilled material. Evenly clean the entire panel in a seam to seam fashion. Do not clean just the spots or stains. When an overall soiled condition has been reached and professional care is required, contact an IICRC certified firm ([www.iicrc.org](http://www.iicrc.org)).

**Note:**

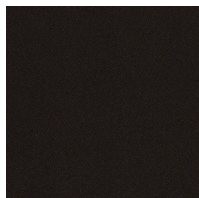
Residue left by cleaning agents will degrade and shorten the life and/or affect the product's appearance if not removed.

### WATER REPELLENT FINISH EXPLAINED

Pop has a water repellent finish. This finish reduces the risk of water and other liquids from penetrating through the textile and soiling the foam of the product.



FOG



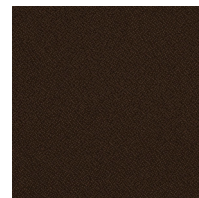
ONYX



SMOKY



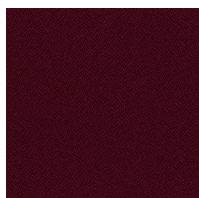
NICKEL



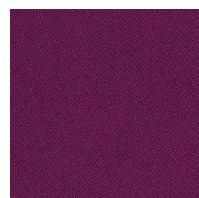
ROOTBEER



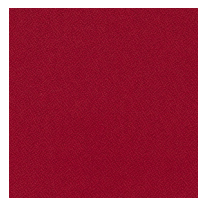
CAFE



MAROON



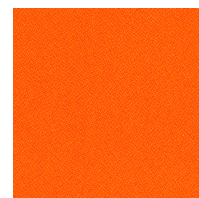
GRAPE



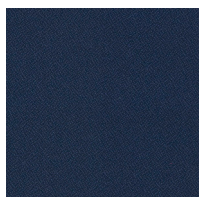
RASPBERRY



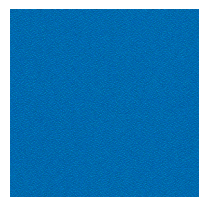
FIRE



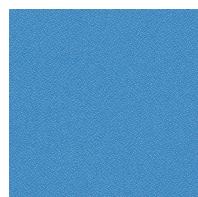
TANGERINE



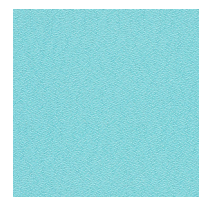
NAVY



ELECTRIC BLUE



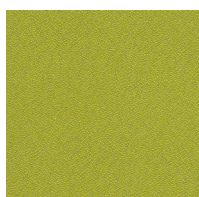
OCEAN



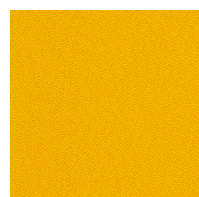
AQUA



DESERT



APPLE



LEMON