

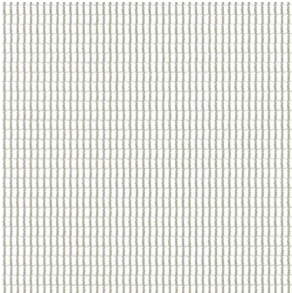
Pattern: micro mesh

100% Polyester

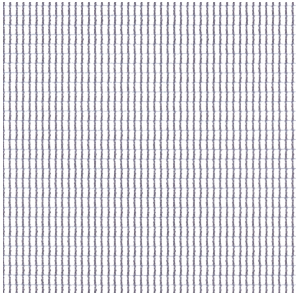
Abrasion:  
100,000 Double Rubs

Bleach Cleanable

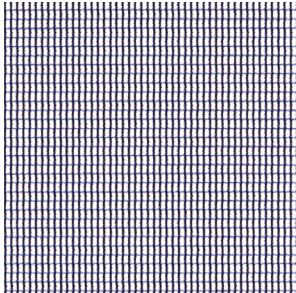
Platinum



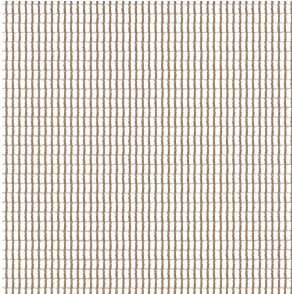
Platinum



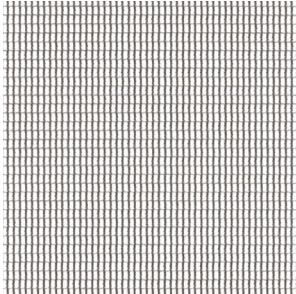
Mist



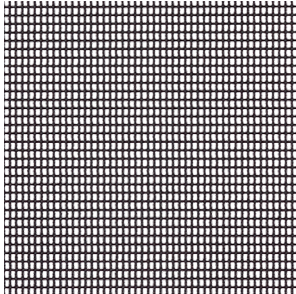
Navy



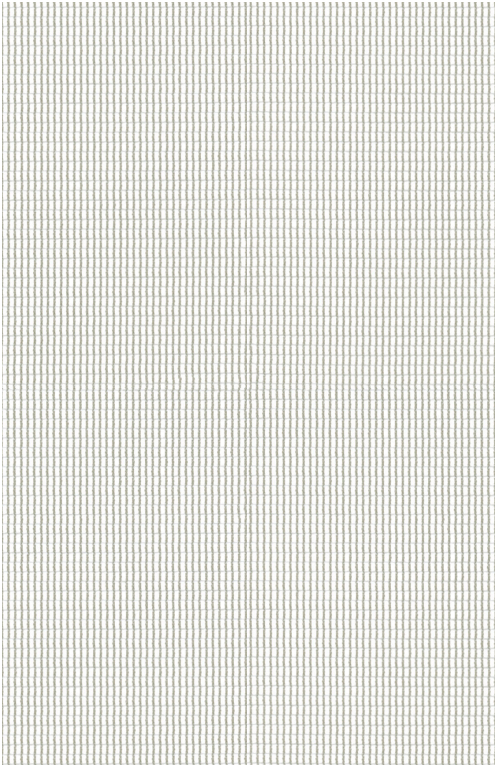
Desert








Nickel



Onyx



<b>Pattern</b>	micro mesh
<b>Content</b>	100% Polyester
<b>Width</b>	54"
<b>Abrasion</b>	100,000 Double Rubs
<b>Applicable ACT®</b>	    
<b>Cleaning Code</b>	WS: Water based cleaning agents and foam may be used, vacuuming or light brushing is recommended to prevent dust and soil build up.  BC: Bleach cleanable (1:10)
<b>Samples</b>	To order samples, call (888) 274-8664 or contact your local SitOnIt Seating sales rep.

### Icon upholstery definitions



#### Fire Retardency

Flammability testing determines a fabric's resistance to burning. Passes Cal 117.



#### Colorfastness to Wet and Dry Crocking

The rubbing off of color from fabric onto clothing, hands or other materials can occur under wet or dry conditions. Passes AATCC 8-1974 Dry Crocking, Class 4 minimum, Wet Crocking, Class 3 minimum.



#### Colorfastness to Light

The degree to which fabric will retain its color when exposed to light. Passes AATCC 16A-1974 or AATCC 16E-1976, Class 4 minimum at 40 hours. Note: Class 4 minimum at 60 hours is recommended for direct sunlight exposure.



#### Physical Properties

Brush Pill Test to determine a fabric's pilling, Breaking/Tensile Strength Test determines the ability of a fabric to withstand tension without breaking or tearing. Seam Slippage Test determines pulling apart of fabrics at the seams. Passes Brush Pill ASTM D3511, 3-4 minimum, Breaking Strength ASTM D3597-D1682 (1975) 50 lbs. minimum in warp & weft, Seam Slippage ASTM D3597-D434-75 25 lbs. minimum warp & weft.



#### Abrasion

The ability of a fabric to withstand damage from wear or rubbing. Passes Heavy Duty Contract ASTM 3597 modified (No. 10 cotton duck); 30,000 double rubs Wyzenbeek Method or ASTM 4966 modified (with 21 oz. wt.); 40,000 rubs Martindale Method.

**SitOnIt • Seating®**

6415 Katella Ave., Cypress, CA. 90630  
sitonit.net • 888.274.8664