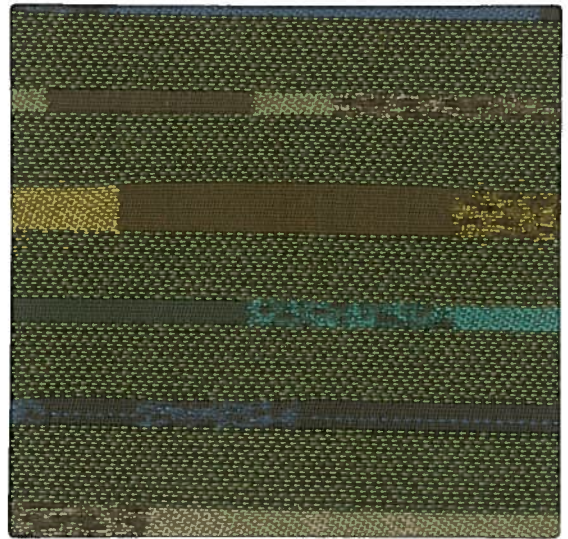




Performance III



Isla Celeste



Bandwidth Gaze



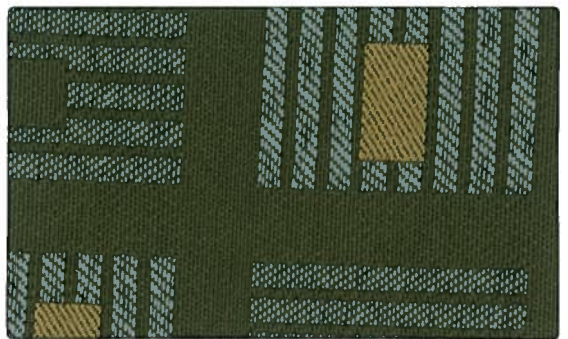
Canter Safari



Redux Key Lime



Amenity Bark



Marquee Celadon



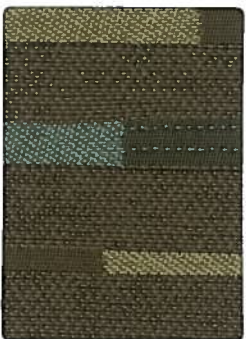
Venue Granny Smith



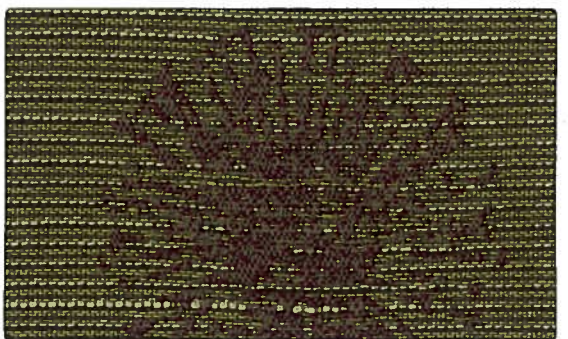
Canter Alfalfa



Redux Mocha



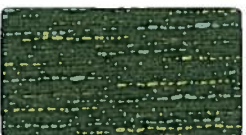
Bandwidth Pose



Isla Thyme



Fuse Morel



Fuse Cress



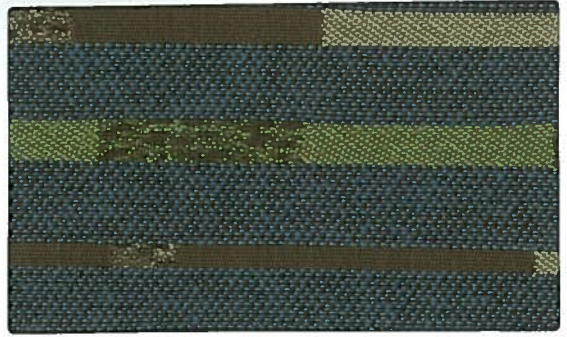
Fuse Pristine



Fuse Malted



Amenity Moonstone



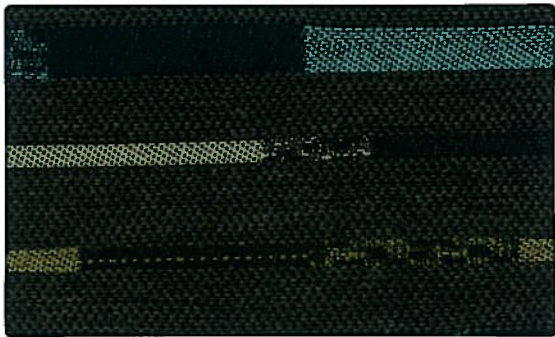
Bandwidth Recess



Vario Calico



Canter Night



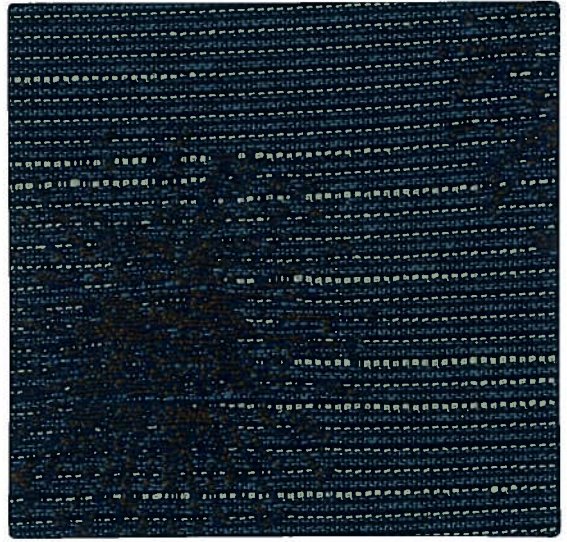
Bandwidth Drama



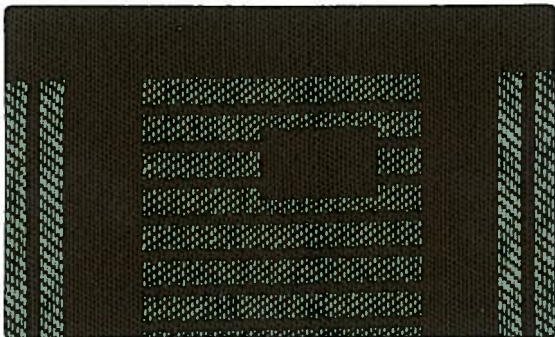
Vario Macchiato



Canter Sable



Isla Skyline



Marquee Bayshore



Venue Wave



Bandwidth Persuasion



Fuse Lunar



Fuse Walnut



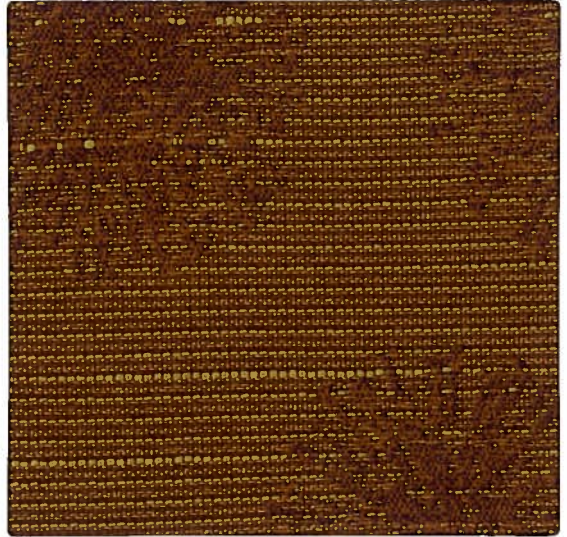
Fuse Azurean



Fuse Pepper



Marquee Fanfare



Isla Nectar



Canter Ancho



Redux Russet



Bandwidth Live Wire



Amenity Chipotle



Venue Blackstone



Canter Onyx



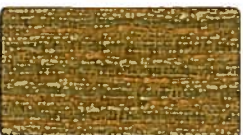
Vario Cranberry



Redux Spice



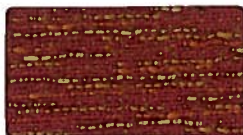
Bandwidth Downtown



Fuse Saffron



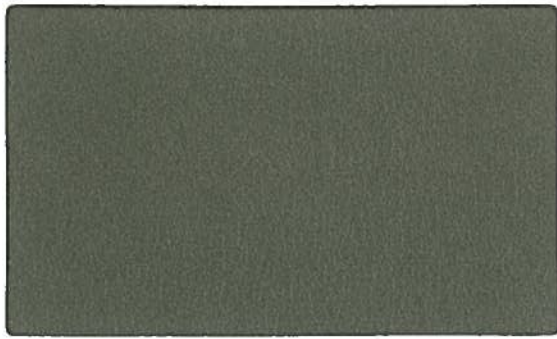
Fuse Ginger



Fuse Pimento



Fuse Carmine



Silica Quartz



Cumulus



Ginger



Burnished



Medal



Dewpoint



Glade



Marigold



Coppercrest



Appletini



Tropic



Skyward



Bistro



Haze



Brownstone



Gallant



Garnet



Herbal



Alloy



Terra



Nero

Silica — An environmentally responsible alternative to PVC/Polyurethanes

Silica features a subtly textured leather look and is available in both a metallic and polished non-metallic surface quality. Momentum Textiles created this new coated fabric from 51% silicone and 49% PLA (a starch-based polyester made from corn). Offering superior durability and cleanability, it's ideal for indoor and outdoor settings.

SUSTAINABILITY

- Zero PVC, Zero solvents
- Greenguard Certified

DURABLE

- Exceeds 365,000 double rubs
- Inherently antimicrobial and antifungal

CLEANABLE

- Ink-erasable with water
- All tested stains clean with water and a damp cloth
- Also cleanable with bleach, solvents or Virox



Even ink from a permanent marker is cleanable

technical information

Width / Pattern	Content / Backing	Finish	Abrasion	Lightfastness	Repeats	Additional Data	Cleaning	Cal 133	Applicable ACT*	Grade
54" AMENITY	100% Solution Dyed Nylon Acrylic Backing	Teflon®	100,000	40 Hrs. Class 4	13 3/4" V 14" H	Directional Pattern	WS	(133)	🔥 A 🌞 🍷	5
54" BANDWIDTH	100% Solution Dyed Nylon Acrylic Backing	Teflon®	300,000	40 Hrs. Class 4	6 5/8" V 5 1/8" H	Directional Pattern	W5	(133)	🔥 A 🌞 🍷	5
54" CANTER**	100% Polyurethane / PVC Free Polyester Knit Backing	Anti-microbial, Anti-bacterial	102,000	40 Hrs. Class 4.5	(none)	Faux Leather	L		🔥 A 🌞 🍷	3
54" FUSE 🌱	65% Post-Industrial Recycled Polyester, 35% Post-Consumer Recycled Polyester Latex Backing	Soil & Stain Resistant	100,000	40 Hrs. Class 4.5	(none)		S	(133)	🔥 A 🌞 🍷	2
56" ISLA 🌱	55% Post-Industrial Recycled Polyester, 29% Post-Consumer Recycled Polyester, 16% Polyester	Crypton® Green	50,000	40 Hrs. Class 4	8" V 7 1/2" H		W	(133)	🔥 A 🌞 🍷	4
57" MARQUEE	65% Polyester, 35% Rayon Acrylic Backing	Incase™ Fabric Protection	63,000	40 Hrs. Class 4	3 1/2" V 3 3/4" H	Directional Pattern Railroaded	S	(133)	🔥 A 🌞 🍷	4
56" REDUX 🌱	65% Post-Industrial Recycled Polyester, 35% Post-Consumer Recycled Polyester	Crypton® Green	138,000	40 Hrs. Class 4	1/2" V 1/2" H		W	(133)	🔥 A 🌞 🍷	4
54" SILICA	51% Silicone, 49% Polylactic Acid	(none)	365,000	200 Hrs. Class 4.5	(none)	Faux Leather	WS	(133)	🔥 A 🌞 🍷	5
54" VARIO	100% Polyester Acrylic Backing	Incase™ Fabric Protection	141,000	40 Hrs. Class 4.5	(none)		W	(133)	🔥 A 🌞 🍷	3
54" VENUE	100% Polyester Acrylic Backing	Incase™ Fabric Protection	120,000	60 Hrs. Class 4.5	3/8" V 1/2" H		W	(133)	🔥 A 🌞 🍷	3

ACT Registered Certification Marks

🌱 Green Products - Recycled Fiber Content

**PVC Free Product

memo samples

Memo samples are available. Please call Momentum at
800-366-6839

MOMENTUM

T E X T I L E S

AMENITY



📞 888.274.8664

📠 714.995.4800

✉ sales@sitonit.net

6415 Katella Avenue, Suite 200

Cypress, CA 906301

icon upholstery definitions



Fire Retardency

Flammability testing determines a fabric's resistance to burning. Passes Cal 117.



Colorfastness to Wet and Dry Crocking

The rubbing off of color from fabric onto clothing, hands or other materials and can occur under wet or dry conditions. Passes AATCC 8-1974 Dry Crocking. Class 4 minimum, Wet Crocking. Class 3 minimum.



Colorfastness to Light

The degree to which fabric will retain its color when exposed to light. Passes AATCC 16A-1974 or AATCC 16E-1976. Class 4 minimum at 40 hours
Note: Class 4 minimum at 60 hours is recommended for direct sunlight exposure.



Physical Properties

Brush Pilling Test to determine a fabric's pilling, Breaking/Tensile Strength Test determines the ability of a fabric to withstand tension without breaking or tearing. Seam Slippage Test determines the pulling apart of fabrics at the seams. Passes Brush Pilling ASTM D3511, 3-4 minimum, Breaking Strength ASTM D3597-D1682-64 (1975) 50 lbs. minimum in warp & weft, Seam Slippage ASTM D3597-D434-75 25 lbs. minimum in warp & weft.



Abrasion

The ability of a fabric to withstand damage from wear and rubbing. Passes Heavy Duty Contract ASTM 3597 modified (No.10 cotton duck); 30,000 double rubs Wyzenbeek Method or ASTM 4966 modified (with 21 oz. wt.); 40,000 rubs Martindale Method.



Cal 133

These fabrics can be used in combination with other designated SitOnIt components to meet the California Technical Bulletin 133 standard for furniture flammability.

cleaning code definitions

L: Warm water, mild soap only. Absolutely NO alcohol-based cleaning agents.

S: Only pure, water-free solvents may be used. Use of water-based or detergent-based solvents may cause shrinking and/or permanent water stains.

W: Water-based cleaning agents or foam may be used.

WS: Clean with water-based cleaning agents, foam or pure, water-free solvents (Energine, Carbona, Renuzit or other similar products). Vacuuming or light brushing is recommended to prevent dust and soil buildup.