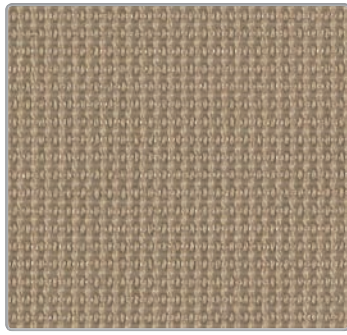
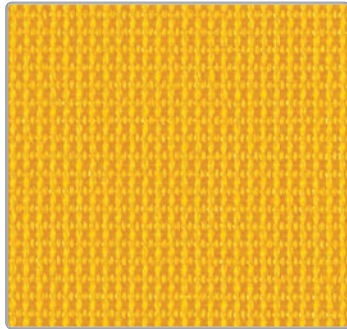


SitOnIt • Seating®

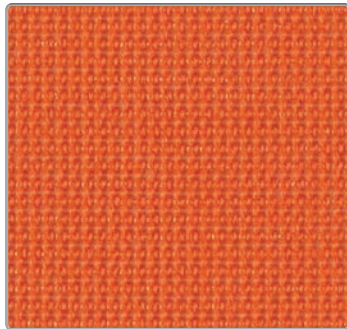
Flyte / Movi / Novo / Qwiz Mesh



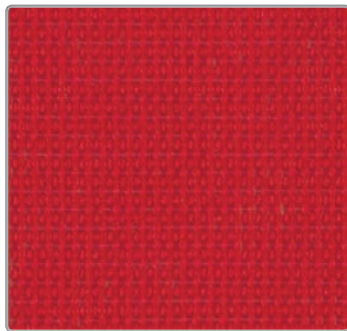
Desert



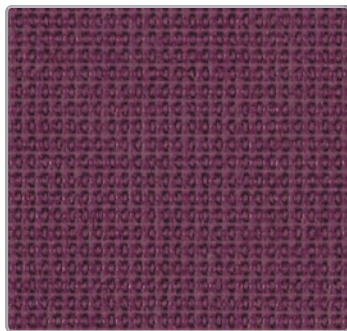
Lemon



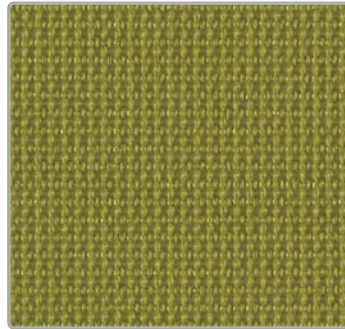
Tangerine



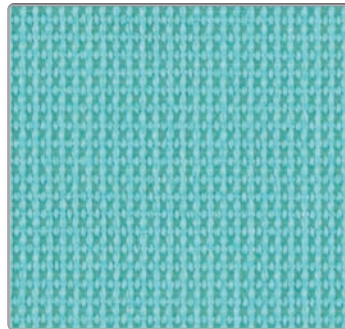
Fire



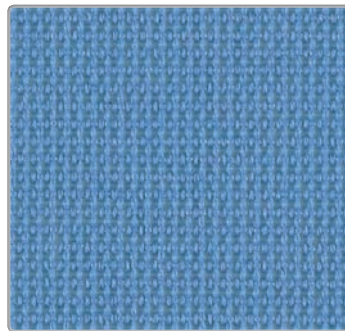
Grape



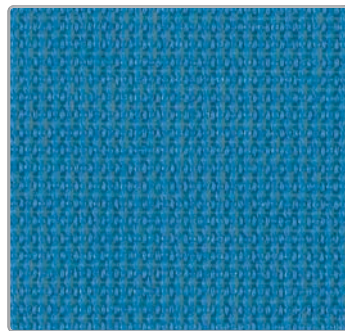
Apple



Aqua



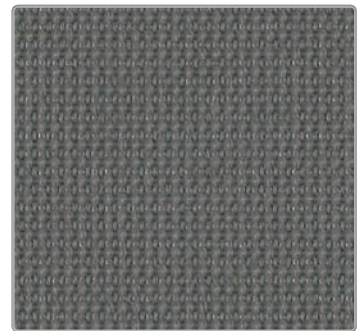
Ocean



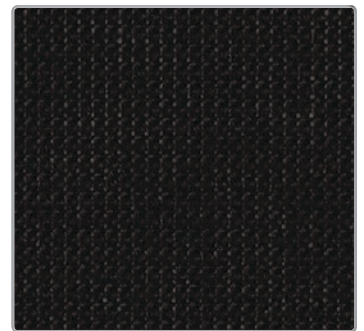
Electric Blue



Fog



Nickel

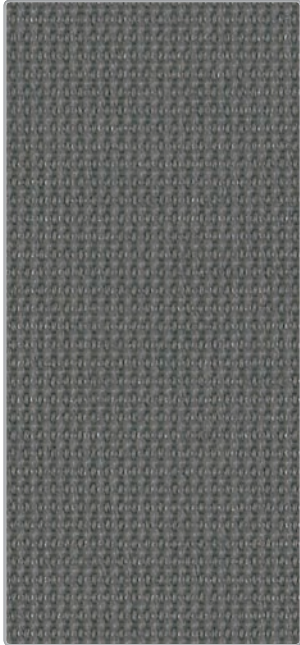







Onyx

68% Polyester,
32% Poly Elastomeric






Abrasion:
100,000 Double Rubs

Bleach cleanable



Pattern	Flyte / Movi / Novo / Qwiz Mesh
Content	68% Polyester, 32% Elastomeric
Width	54"
Abrasion	100,000 Double Rubs
Applicable ACT®	    
Cleaning Code	WS/BC: 10:1 WS: Water based foam or cleaner BC: Bleach Cleanable 10:1
Samples	To order samples, call (888) 274-8664 or visit sitonit.net

icon upholstery definitions

-  **Fire Retardancy**
Flammability testing determines a fabric's resistance to burning. Passes Cal 117.
-  **Colorfastness to Wet and Dry Crocking**
The rubbing off of color from fabric onto clothing, hands or other materials and can occur under wet or dry conditions. Passes AATCC 8-1974 Dry Crocking. Class 4 minimum, Wet Crocking. Class 3 minimum.
-  **Colorfastness to Light**
The degree to which fabric will retain its color when exposed to light. Passes AATCC 16A-1974 or AATCC 16E-1976. Class 4 minimum at 40 hours
Note: Class 4 minimum at 60 hours is recommended for direct sunlight exposure.
-  **Physical Properties**
Brush Pilling Test to determine a fabric's pilling, Breaking/Tensile Strength Test determines the ability of a fabric to withstand tension without breaking or tearing. Seam Slippage Test determines the pulling apart of fabrics at the seams. Passes Brush Pilling ASTM D3511, 3-4 minimum, Breaking Strength ASTM D3597-D1682-64 (1975) 50 lbs. minimum in warp & weft, Seam Slippage ASTM D3597-D434-75 25 lbs. minimum in warp & weft.
-  **Abrasion**
The ability of a fabric to withstand damage from wear and rubbing. Passes Heavy Duty Contract ASTM 3597 modified (No.10 cotton duck); 30,000 double rubs Wyzenbeek Method or ASTM 4966 modified (with 21 oz. wt.); 40,000 rubs Martindale Method.

SitOnIt • Seating®

(888) 274-8664

(714) 995-4855 Fax

sitonit.net

sales@sitonit.net

Showroom Locations

Los Angeles

6415 Katella Avenue
Cypress, CA 90630

Chicago

222 Merchandise Mart Plaza
Suite 1150
Chicago, IL 60654

New York City

11 East 26th
New York, NY 10010