

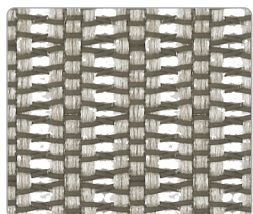
SitOnIt • Seating

Focus 2.0 Mesh

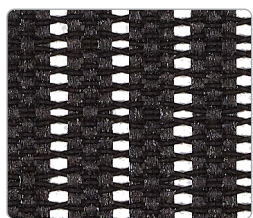
Focus Mesh



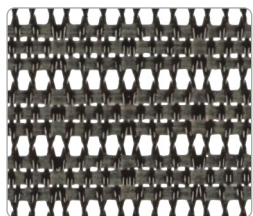
Slate



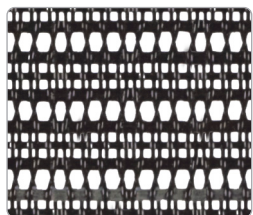
Sand



Black

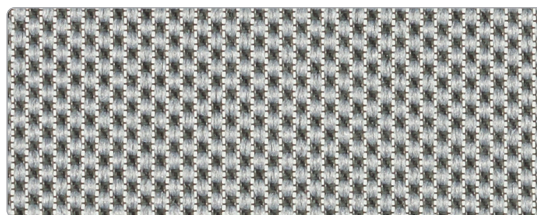


Impress

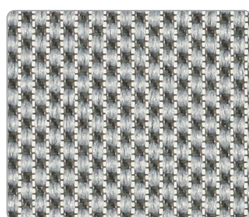


Freeway

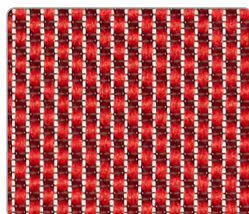
Focus 2.0 Mesh



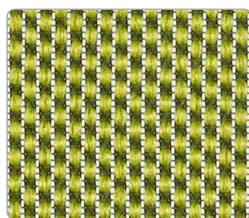
Fog



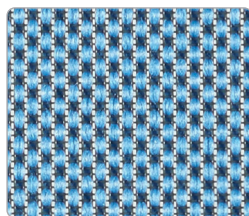
Fog



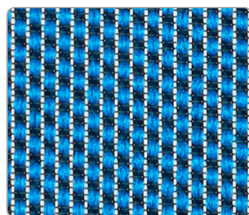
Fire



Apple



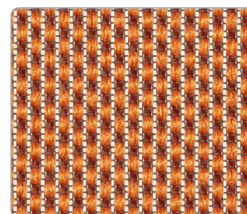
Ocean



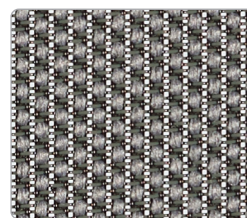
Electric Blue



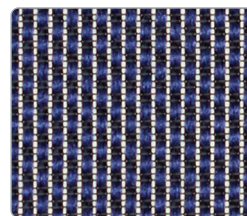
Desert



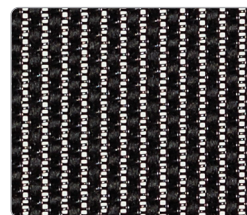
Tangerine



Nickel

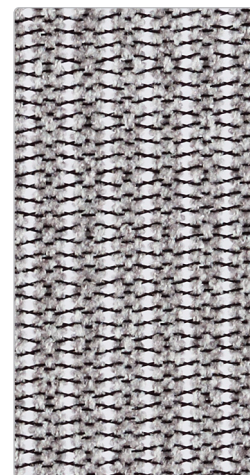


Navy

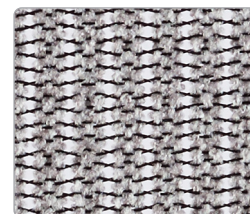


Onyx

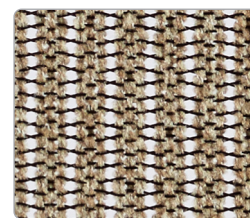
Focus 2.0 Uptown Mesh



Ash



Ash



Dune


















Charcoal








Midnight

CAL 133 approved

Bleach cleanable

Pattern	Content	Abrasion	Applicable ACT®	Cleaning Code
Focus Mesh	30% Polyester, 70% Polyelastomeric	100,000+ Double Rubs	    	WS BC (1:10)
Focus 2.0 Mesh	30% Polyester, 70% Polyelastomeric	100,000+ Double Rubs	    	BC (1:10)
Focus 2.0	53% Polyester, 47% Polyelastomeric	60,000+ Double Rubs	    	BC (1:10)

These patterns meet or exceed these ACT Performance standards for upholstery:     

To see full repeat of mesh patterns, configure your product ChairBuilder.com.
To order samples, call 714.995.4800 or contact your local SitOnIt Seating sales rep.

icon upholstery definitions



Fire Retardancy

Flammability testing determines a fabric's resistance to burning. Passes Cal 117.



Colorfastness to Wet and Dry Crocking

The rubbing off of color from fabric onto clothing, hands or other materials and can occur under wet or dry conditions. Passes AATCC 8-1974 Dry Crocking. Class 4 minimum, Wet Crocking. Class 3 minimum.



Colorfastness to Light

The degree to which fabric will retain its color when exposed to light. Passes AATCC 16A-1974 or AATCC 16E-1976. Class 4 minimum at 40 hours
Note: Class 4 minimum at 60 hours is recommended for direct sunlight exposure.



Physical Properties

Brush Pill Test to determine a fabric's pilling, Breaking/Tensile Strength Test determines the ability of a fabric to withstand tension without breaking or tearing. Seam Slippage Test determines the pulling apart of fabrics at the seams. Passes Brush Pill ASTM D3511, 3-4 minimum, Breaking Strength ASTM D3597-D1682-64 (1975) 50 lbs. minimum in warp & weft, Seam Slippage ASTM D3597-D434-75 25 lbs. minimum in warp & weft.



Abrasion

The ability of a fabric to withstand damage from wear and rubbing. Passes Heavy Duty Contract ASTM 3597 modified (No.10 cotton duck); 30,000 double rubs Wyzenbeek Method or ASTM 4966 modified (with 21 oz. wt.); 40,000 rubs Martindale Method.

SitOnIt • Seating®

6415 Katella Ave. • Cypress, CA 90630
sitonit.net • 888.274.8664