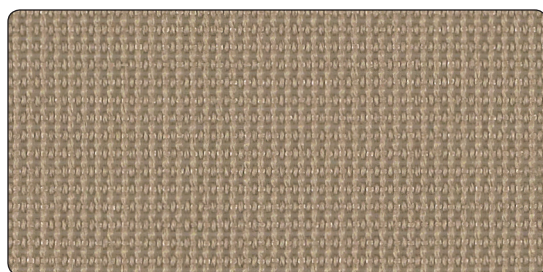
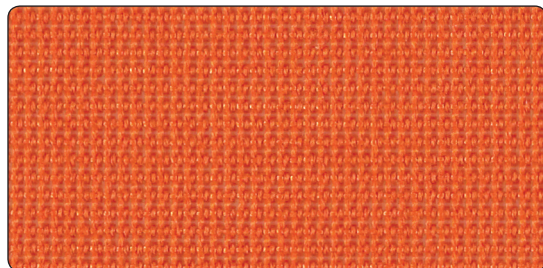


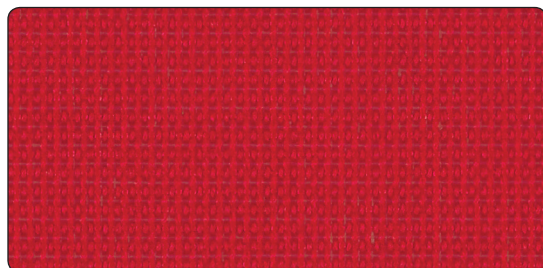
Mavic Mesh



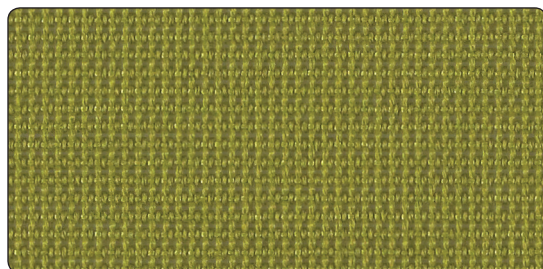
Desert



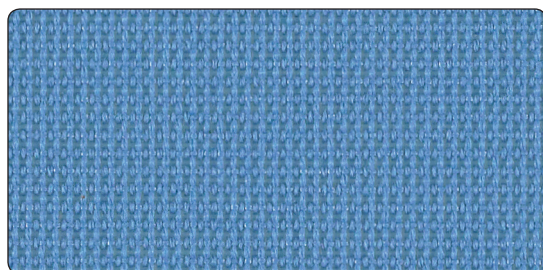
Tangerine



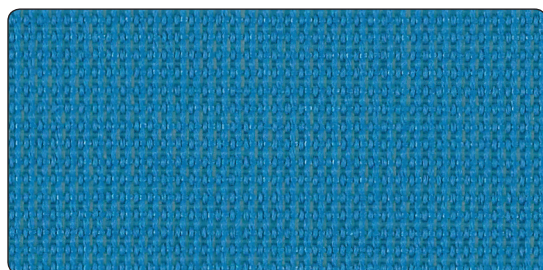
Fire



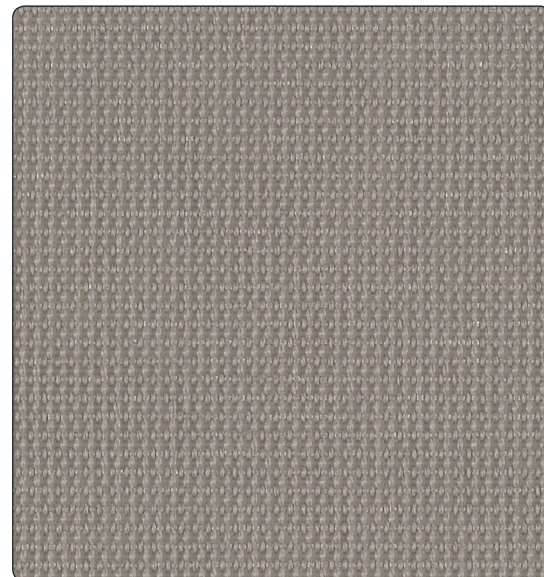
Apple



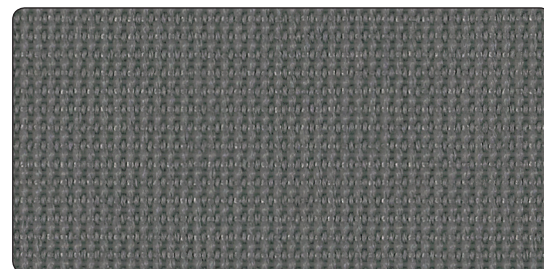
Ocean



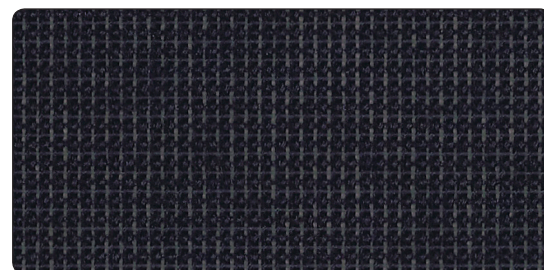
Electric Blue



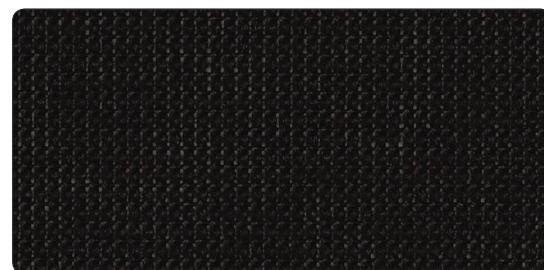
Fog



Nickel



Navy



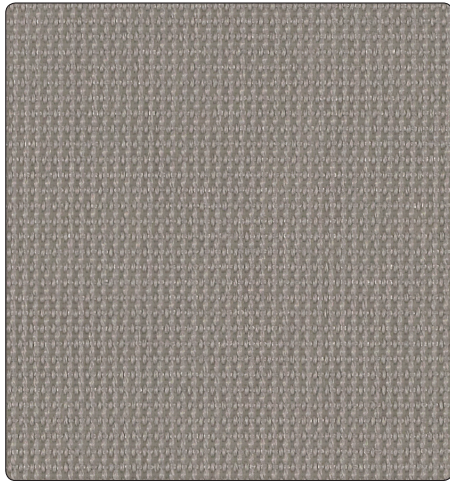
Onyx






Pattern: Mavic Mesh

68% Polyester,
32% Poly Elastomeric

Abrasion:
100,000 double rubs

Bleach Cleanable



Pattern	Mavic Mesh
Content	68% Polyester, 32% Elastomeric
Width	54"
Abrasion	100,000 Double Rubs
Applicable ACT®	    
Cleaning Code	WS/BC: 10:1 WS: Water based foam or cleaner BC: Bleach Cleanable 10:1
Samples	To order samples, call (888) 274-8664 or visit sitonit.net

icon upholstery definitions



Fire Retardancy

Flammability testing determines a fabric's resistance to burning. Passes Cal 117.



Colorfastness to Wet and Dry Crocking

The rubbing off of color from fabric onto clothing, hands or other materials and can occur under wet or dry conditions. Passes AATCC 8-1974 Dry Crocking. Class 4 minimum, Wet Crocking. Class 3 minimum.



Colorfastness to Light

The degree to which fabric will retain its color when exposed to light. Passes AATCC 16A-1974 or AATCC 16E-1976. Class 4 minimum at 40 hours. Note: Class 4 minimum at 60 hours is recommended for direct sunlight exposure.



Physical Properties

Brush Pill Test to determine a fabric's pilling, Breaking/Tensile Strength Test determines the ability of a fabric to withstand tension without breaking or tearing. Seam Slippage Test determines the pulling apart of fabrics at the seams. Passes Brush Pill ASTM D3511, 3-4 minimum, Breaking Strength ASTM D3597-D1682-64 (1975) 50 lbs. minimum in warp & weft, Seam Slippage ASTM D3597-D434-75 25 lbs. minimum in warp & weft.



Abrasion

The ability of a fabric to withstand damage from wear and rubbing. Passes Heavy Duty Contract ASTM 3597 modified (No.10 cotton duck); 30,000 double rubs Wyzenbeek Method or ASTM 4966 modified (with 21 oz. wt.); 40,000 rubs Martindale Method.

SitOnIt • Seating®

(888) 274-8664

(714) 995-4855 Fax

sitonit.net

sales@sitonit.net

Showroom Locations

Los Angeles

6415 Katella Avenue
Cypress, CA 90630

Chicago

222 Merchandise Mart Plaza
Suite 1150
Chicago, IL 60654

New York City

11 East 26th
New York, NY 10010