
Sona®



SitOnIt • Seating®



California born and bred

We're a leading manufacturer of commercial solutions in the U.S. — and #1 in task chairs. From tables and lounge to screens and more, we've been the go-to destination for comprehensive, build-to-order solutions for almost 25 years. We combine award-winning design with the fastest lead times around, and our design and planning services can turn product innovation into your space inspiration. We're able to build almost any specification you want, deliver it when you need it, and offer a level of value no one can match. It's all part of our indie California spirit and drive to be the one place you go for any (and every) space.

Designed by Jorge Pensi



Known for his fluid, elegant aesthetic, award-winning furniture and lighting designer Jorge Pensi creates timeless pieces that adapt easily to multiple environments. Pensi studied architecture in his native Buenos Aires before moving to Barcelona and establishing his design practice there in 1984. During Spain's new design movement, Pensi emerged as one its key players with his modern, universally appealing style.



Designed for (executive) decisions

Create contemporary conference rooms with the distinct style of Sona. This up-to-any-task chair surrounds your tables with smart, sleek and slim lines while powering productivity with essential ergonomic engineering.



With the unique pull-handle frame option, you can add ease and convenience to any conference room clean-up or collaboration.



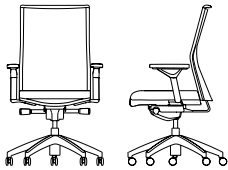
Big-idea backing

Provide C-suite comfort and lasting support for every pitch and presentation with a lumbar curve and height-adjustable back — available in upscale upholstery and 11 eco-friendly airy knit meshes made from 100% recycled pre- and post-consumer materials.





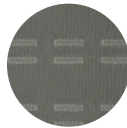
Specifications



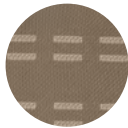
Model	5723 Conference Chair
Overall Width With Arms	27
Overall Width Armless	26
Overall Depth	25
Overall Height	37-43.5
Seat Width	19
Seat Depth	18
Seat Height	17.5-20.5
Back Width	19
Back Height	25
Weight Armless	46 lb
Weight With Arms	52 lb
COM	1 yd (B7) 1.75 yd (B8)
COL	17 sq ft (B7) 32 sq ft (B8)
Weight Capacity Warranty	300 lb

Dimensions are in inches. • Knit back (B7). Upholstered back (B8).

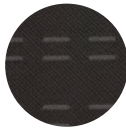
Twin Knit



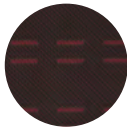
Winter Gray



Toffee

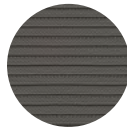


Shadow



Licorice

Textured Knit



Cool Gray



Dune



Forest



Mocha



Ocean



Merlot



Black

Made with **REPREVE**

Pull Handle



Silver Metallic



Black Nylon

Arm



Fixed Open Loop - Black



Fixed Open Loop - Silver



Adjustable (6-way)

Base Finishes



Black Nylon



Silver Metallic



Polished Aluminum



Brushed Aluminum



SitOnIt • Seating®

FRONT COVER TEXTILE: Sili-Tex Leather, Clay

For more information, please visit us at sitonit.net • tel (888) 274-8664 • fax (714) 995-4855 • sales@sitonit.net • 6415 Katella Avenue, Cypress, CA 90630

SitOnIt Seating and Sona are trademarks or registered trademarks of Exemplis LLC. ©2023 Exemplis LLC. Form No. C156 2K Printed in USA.

#230117