



MOMENTUM  
TEXTILES

CRYPTON

SitOn.It • Seating®







FAUX FELT SPROUT



PEBBLE



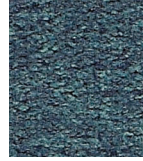
STONE



LAGOON



BARK



POOL



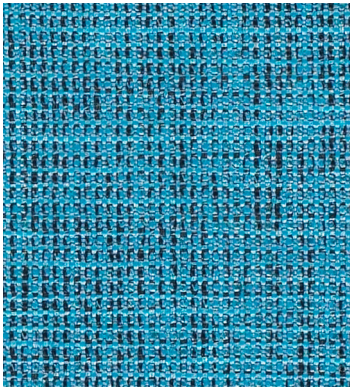
VIBRANT



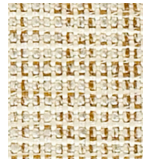
GRAPHITE



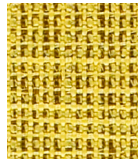
CHARCOAL



HOBNOB BEYOND



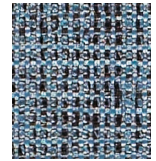
GINGER



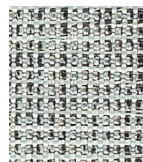
LIMON



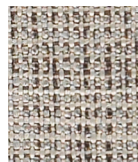
ZEBRA



BAY



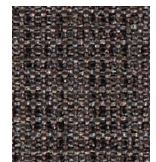
TIDE



ASH



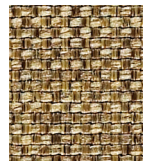
TANGELO



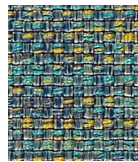
CARBON



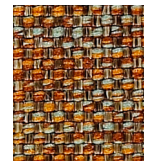
KIT QUARTZ



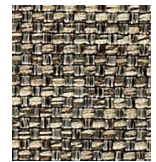
EARTH



PARADISE



MOONSTONE



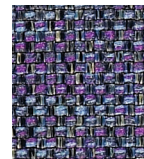
PEBBLE



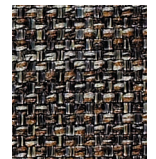
FIESTA



AQUA



PACIFIC



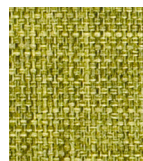
EBONY



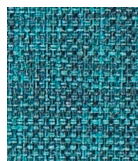
COVER CLOTH OAT



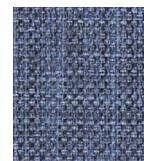
PLATINUM



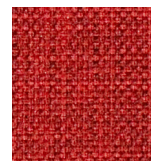
SORREL



CYAN



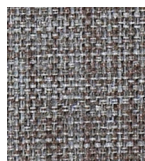
DELFT



FLAME



TAUPE



VESPER



INDIGO



HICKORY

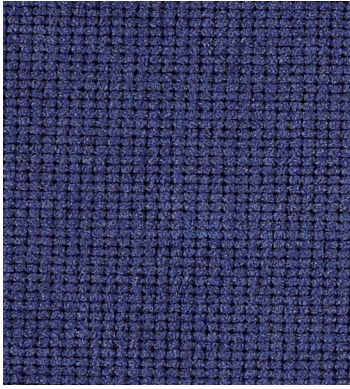


GRAPHITE



JET





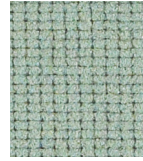
OATH AZURE



VERBENA



CELADON



JUNIPER



CHARCOAL



BURLWOOD



DRIFTWOOD



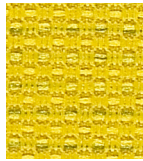
LODESTONE



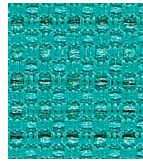
ANISE



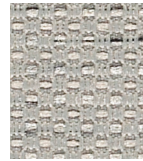
SPORT APPLE



DAYGLOW



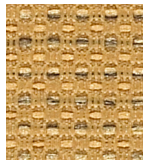
TURQUOISE



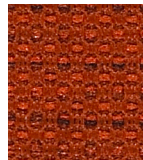
PEWTER



MERCURY



FLAX



BRICK



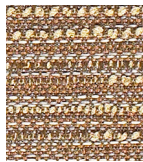
COBALT



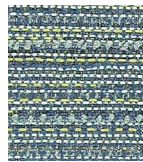
ONYX



SYNERGY BEDROCK



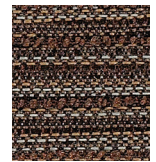
BARLEY



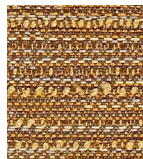
AEGEAN



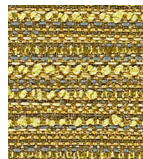
TANGO



BALSAMIC



PECAN



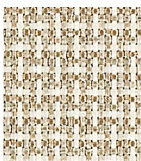
MEADOW



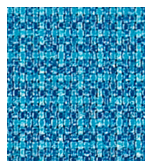
DENIM



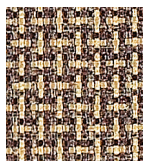
CARBON



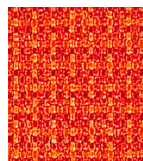
SOLITAIRE DOVE



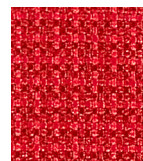
CYAN



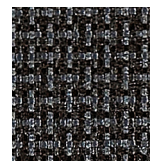
TOBACCO



POPPY



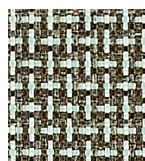
JUBILEE



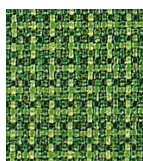
MIDNIGHT



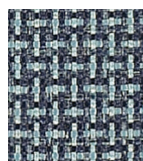
TINSEL



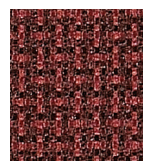
MIST



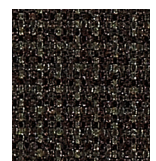
EMERALD



CADET



CURRANT



ONYX

## technical information

Pattern	Content	Finish	Approx. Repeats	Abrasion Resistance (Double Rubs)	CAL 133	Applicable ACT*	Cleaning Code	Grades
Cover Cloth	56% Repreve® Post Consumer Recycled Polyester, 44% Polyester	Crypton® Green		200,000	(133)		W/BC 10:1	3
Faux Felt	62% Repreve® Post Consumer Recycled Polyester, 38% Polyester	Crypton® Green		75,000	(133)		WS/BC 10:1	4
Hobnob	51% Recycled Polyester 49% Polyester	Crypton® Green		87,000	(133)		W/BC 10:1	4
Kit*	57% Recycled Polyester, 43% Polyester	Crypton® Green		200,000	(133)		W/BC 10:1	4
Oath	50% Repreve® Post Consumer Recycled Polyester, 50% Polyester	Crypton® Green		204,000	(133)		W/BC 10:1	5
Solitaire	50% Repreve® Post Consumer Recycled Polyester, 50% Polyester	Crypton® Green	1/8" L. x 1/8" W.	200,000	(133)		W/BC 10:1	3
Sport	98% Post Consumer Recycled Polyester, 2% Polyester	Crypton® Green		100,000	(133)		W/BC 10:1	5
Synergy**	71% Repreve® Post Consumer Recycled Polyester, 29% Polyester	Crypton® Green		165,000	(133)		W/BC 10:1	5

\*Not approved for Gobi, Pasea and Nano

\*\*Not approved for Mika and Prava

\*ACT\* Registered Certification Marks

### icon upholstery definitions

- Fire Retardancy**  
Flammability testing determines a fabric's resistance to burning. Passes Cal 117.
- Colorfastness to Wet and Dry Crocking**  
The rubbing off of color from fabric onto clothing, hands or other materials and can occur under wet or dry conditions. Passes AATCC 8-1974 Dry Crocking. Class 4 minimum, Wet Crocking. Class 3 minimum.
- Colorfastness to Light**  
The degree to which fabric will retain its color when exposed to light. Passes AATCC 16A-1974 or AATCC 16E-1976. Class 4 minimum at 40 hours  
Note: Class 4 minimum at 60 hours is recommended for direct sunlight exposure.
- Physical Properties**  
Brush Pili Test to determine a fabric's pilling, Breaking/Tensile Strength Test determines the ability of a fabric to withstand tension without breaking or tearing. Seam Slippage Test determines the pulling apart of fabrics at the seams. Passes Brush Pili ASTM D3511, 3-4 minimum, Breaking Strength ASTM D3597-D1682-64 (1975) 50 lbs. minimum in warp & weft, Seam Slippage ASTM D3597-D434-75 25 lbs. minimum in warp & weft.
- Abrasion**  
The ability of a fabric to withstand damage from wear and rubbing. Passes Heavy Duty Contract ASTM 3597 modified (No.10 cotton duck); 30,000 double rubs Wyzenbeek Method or ASTM 4966 modified (with 21 oz. wt.); 40,000 rubs Martindale Method.
- CAL 133**  
These fabrics can be used in combination with other designated SitOnIt Seating components to meet the California Technical Bulletin 133 standard for furniture flammability. Cal 133 has been tested and approved for SitOnIt products.

### cleaning code definitions

W: Water-based foam or cleaners.

WS: Water-based cleaning agents or foam.

BC: Bleach Cleanable

For memo samples contact:

**MOMENTUM**  
T E X T I L E S

800-366-6839  
memosamples.com

SitOnIt • Seating®

6415 Katella Ave. • Cypress, CA 90630  
tel. 888.274.5933 • sitonit.net  
Form No. C6288-7/20-7000 ©2020 Exemplis

**5** CLICKS  
In 5 simple clicks, you can find hundreds of pre-approved, in grade, and in stock fabrics.